



# Index

|   |           |
|---|-----------|
| <b>Acknowledgements</b> .....   | 1         |
| <b>EXECUTIVE SUMMARY</b> .....  | 1         |
| <b>1.0 INJURY RATES</b> .....   | <b>1</b>  |
| <b>1.1 Time loss injury rate</b> .....  | <b>1</b>  |
| Figure 1 - Manitoba Time Loss Injury Rate, 2000 to 2007 .....   | 1         |
| <b>1.2 All Injury Rate</b> .....  | <b>2</b>  |
| Figure 2 – Manitoba All Injury Rates for 2000 to 2007 .....   | 2         |
| <b>1.3 Injury Rates by Age Group and Gender</b> .....   | <b>3</b>  |
| Figure 3 - Time Loss Injury Rates by Age Group and Gender, 2007 .....   | 3         |
| Figure 4 - Time Loss Injury Rates by Age Group 2000 to 2007 .....   | 3         |
| Figure 5 - Male Time Loss Injury Rates by Age Group, 2000 to 2007 .....   | 5         |
| Figure 6 - Female Time Loss Injury Rates by Age Group 2000 to 2007 .....  | 6         |
| <b>1.4 Industry Sector and Sub-Sector Rates</b> .....   | <b>7</b>  |
| Table 1 - Time Loss Injury Rate by Major Industry Sectors and Selected Sub-Sectors, 2000 to 2007 .....            | 7         |
| Figure 7 - Time Loss Injury Rate by Major Industry Sectors, 2000 and 2007 .....                                   | 8         |
| Table 2 - All Injury Rate by WCB Industry Sectors and Selected Sub-Sectors, 2000 to 2007 .....                    | 9         |
| Figure 8 - All Injury Rate by Major Industry Sectors, 2000 and 2007 .....   | 10        |
| Figure 9 – All Injury Rate and Time Loss Injury Rate, Selected Manufacturing Sub-Sectors, 2007 .....              | 11        |
| Figure 10 - All Injury Rate and Time Loss Injury Rate, Other Industry Sub-Sectors, 2007 .....                     | 12        |
| <b>2.0 WORKPLACE FATALITIES</b> .....   | <b>13</b> |
| <b>2.1 Acute-Hazard and Occupational Disease Fatalities</b> .....   | <b>13</b> |
| Figure 11 - Acute-Hazard and Occupational Disease Fatalities, 2000-2007 .....                                     | 13        |
| Figure 12 - Acute-Hazard and Occupational Disease Fatalities, 2000 to 2007 by Cause .....                         | 13        |
| Figure 13 - Fatalities in the Workplace (Acute Hazard and Occupational Disease) by Occupation, 2000 to 2007 ..... | 13        |
| Figure 14 - Distribution of Acute-Hazard and Occupational Disease Fatalities by Age, 2000 to 2007 .....           | 16        |
| <b>2.2 Acute-Hazard Fatalities</b> .....  | <b>17</b> |
| Table 3- Acute-Hazard Fatalities, 2007 .....  | 17        |
| Table 4 - Acute-Hazard Exposure Fatalities by Industry, 2000 to 2007 .....  | 19        |
| Figure 15 - Acute-Hazard Fatalities by Major Industry Sectors, 2000 to 2007 .....                                 | 20        |
| <b>2.3 Occupations Disease Fatalities</b> .....   | <b>21</b> |
| Table 5 - Occupational Disease Fatalities Accepted by the WCB, 2000 to 2007 .....                                 | 21        |
| Table 6 Occupational Disease Fatalities 2007 .....  | 22        |
| <b>3.0 WORKPLACE INJURY AND ILLNESS ANALYSIS</b> .....  | <b>23</b> |
| <b>3.1 Time Loss and No time Loss injuries</b> .....  | <b>23</b> |
| Table 7 – Notified and Accepted Time Loss and No Time Loss Injuries, 2000 to 2007 .....                           | 23        |
| Figure 16 - Trends in Time Loss and No Time Loss Injuries 2000-2007 .....   | 24        |
| <b>3.2 Accepted Injuries by Age Group</b> .....   | <b>25</b> |
| Table 8- Injuries by Age Group, 2000 to 2007 .....  | 25        |
| Figure 17 - Proportion of All Injuries and Employment by Age Group, 2007 .....                                    | 26        |
| Figure 18 - All Injuries by Age Group, 2000 to 2007 .....   | 27        |
| <b>3.3 Accepted Injuries by Gender</b> .....  | <b>28</b> |
| Table 9 - Injuries by Gender, 2000 to 2007 .....  | 28        |
| Figure 19 - Injuries by Gender, 2000 to 2007 .....  | 29        |
| <b>3.4 Injuries by Industry Sector</b> .....  | <b>30</b> |
| Table 10 - Time Loss Injuries by Major Industry Sectors and Selected Sub-Sectors, 2000 to 2007 .....              | 30        |
| Table 11 – All Injuries by Major Industry Sectors and Selected Sub-Sectors, 2000 to 2007 .....                    | 31        |
| Figure 20 – Proportions of Injuries and FTE Workers by Major Industry Sectors, 2007 .....                         | 32        |
| Figure 21 - Time Loss Injury Trends in Major Occupational Groupings, 2000 to 2007 .....                           | 33        |
| Figure 22 - Percent Distribution of All Injuries by Major Industry Sectors, 2000 to 2007 .....                    | 34        |
| Figure 23 - Male Injuries by Major Industry Sectors, 2000 to 2007 .....   | 35        |
| Figure 24 - Female Injuries by Major Industry Sectors, 2000 to 2007 .....   | 36        |
| <b>3.5 Occupations of Injured and Ill Workers (Time Loss Injuries Only)</b> .....                                 | <b>37</b> |
| Table 12- Time Loss Injuries by Occupational Groups, 2000 to 2007 .....   | 37        |
| <b>3.6 Part of Body Injured</b> .....   | <b>38</b> |
| Table 13 - Injuries by Part of Body Injured (“Stickman Codes”), 2000 to 2007 .....                                | 38        |
| Table 14 - Time Loss Injuries by Part of Body Affected, 2000 to 2007 .....  | 39        |
| <b>3.7 Time Loss Injuries by Nature of Injury or Illness</b> .....  | <b>40</b> |
| Table 15 - Time Loss Injuries by Nature of Injury or Illness, 2000 to 2007 .....                                  | 40        |
| <b>3.8 Time Loss Injuries by Source of Injury or Illness</b> .....  | <b>41</b> |
| Table 16 - Time Loss Injuries by Source of Injury or Illness, 2000 to 2007 .....                                  | 41        |
| <b>3.9 Time Loss Injuries by Event or Exposure of Injury or Illness</b> .....                                     | <b>43</b> |
| Table 17 - Time Loss Injuries by Type of Event or Exposure of Injury or Illness, 2000 to 2007 .....               | 43        |
| <b>3.10 Musculoskeletal Injuries</b> .....  | <b>44</b> |
| Table 18 - Musculoskeletal Time Loss Injuries (MSI), 2000 to 2007 .....   | 44        |
| Figure 25 – The Number and Proportion of Musculoskeletal Injuries to Time Loss Injuries, 2000 to 2007 .....       | 45        |

## **Acknowledgements**

The Manitoba Workplace Injury Statistics Report for 2000-2007 is the fifth annual report of this type. Its continued development is the result of cooperative efforts between the Workplace Safety and Health Division of Manitoba Labour and Immigration and the Workers Compensation Board of Manitoba (WCB) and is an integral component of Manitoba's joint injury prevention strategy (*SAFE Work*).

This report is developed from the WCB's injury data for the years 2000-2007. The report is based on injuries which the WCB was notified about and that were accepted by the WCB, or fatalities that were adjudicated in a particular year. This is a new approach to the data, and consequently comparisons between this report and previous editions are not advised.

Members of the committee involved in the on-going initiative to develop improved workplace injury and illness surveillance and reporting systems for the province include Dr. Ted Redekop and Jo-Anna Guerra from the Workplace Safety and Health Division of Manitoba Labour and Immigration, and Barry Warrack, Michael Rohatynsky, Janet Sprout, Murray Lempen, Jim Brown, Krista Breckman and Kwame Darko-Mensah from the Workers Compensation Board of Manitoba.

## **EXECUTIVE SUMMARY**

### **Major highlights of Manitoba workplace injury data, 2000 to 2007:**

#### **Injuries and Injury Rate trends:**

- The provincial time loss injury rate fell from a high of 5.6 time loss injuries per 100 workers in 2000 to 4.2 in 2007. This is a drop of 25% over the period.
- Young men aged 20 to 24 continue to be at a higher risk of workplace injury than other workers. However, the time loss injury rate for young men has declined significantly from 9.7 in 2000 to 5.9 in 2007, a 39% drop.
- Contrary to the prevailing trend, the time loss rate for workers over the age of 45 has not fallen. In the past, older workers have traditionally had much lower rates of injury. In recent years, the gap between injury rates for older workers and all workers has narrowed.
- The manufacturing sector has experienced a significant reduction in injuries since 2000, falling 40% from 2000 to 2007. Improvements in this sector have been the major influence in overall trends observed over the last eight years.

## Fatalities

- There are two kinds of occupational fatalities: *acute hazard* (e.g., fatalities from exposure to hazards such as falls from height that cause serious traumatic injuries) where death occurs immediately or soon after a worker is injured or exposed, or *occupational disease* (e.g., exposures to asbestos and toxic fumes causing cancer in workers) where death occurs months or years after the exposure.
- The number of occupational fatalities varies significantly from year to year. In 2007, there were 30 acute hazard fatalities and 12 occupational disease fatalities.

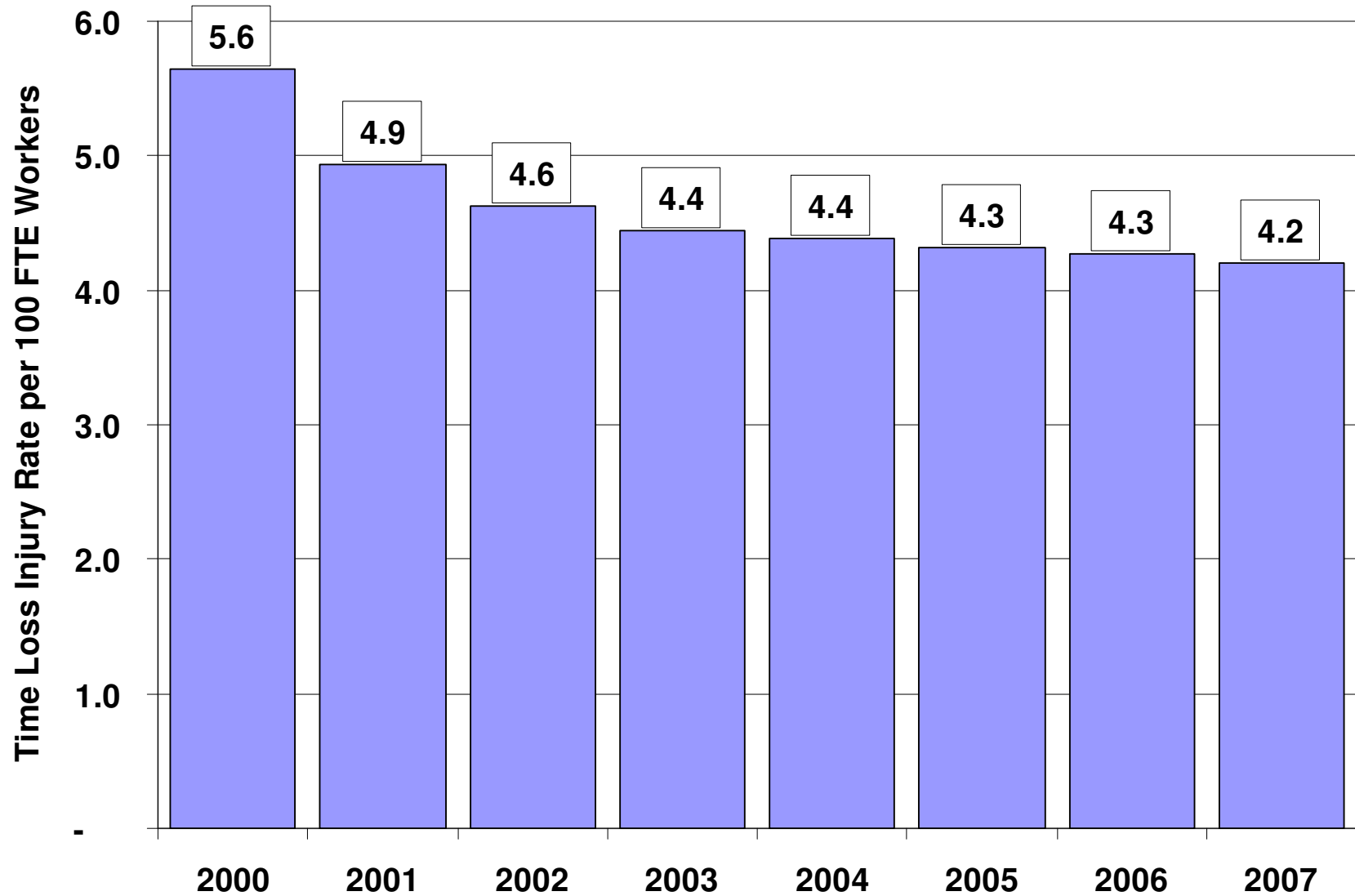
## Musculoskeletal Injuries

- Musculoskeletal injuries, or MSIs, are injuries to or disorders of the muscles, tendons, ligaments, joints, nerves, blood vessels or related soft tissue including sprains, strains and inflammation.
- MSIs often occur as a result of improper or inadequate workplace design or work processes. MSIs represent an increasing share of all workplace injuries, increasing from 53.3% of time loss injuries in 2000 to 62.2% in 2007, although the total number of MSIs has increased slightly. This is primarily because the number of non-MSI traumatic injuries to eyes, hand, arms and feet has been reduced, especially in manufacturing.
- The health care sector has the largest proportion of MSIs. In 2007, 80% of time loss injuries in that sector were MSIs.

# 1.0 INJURY RATES

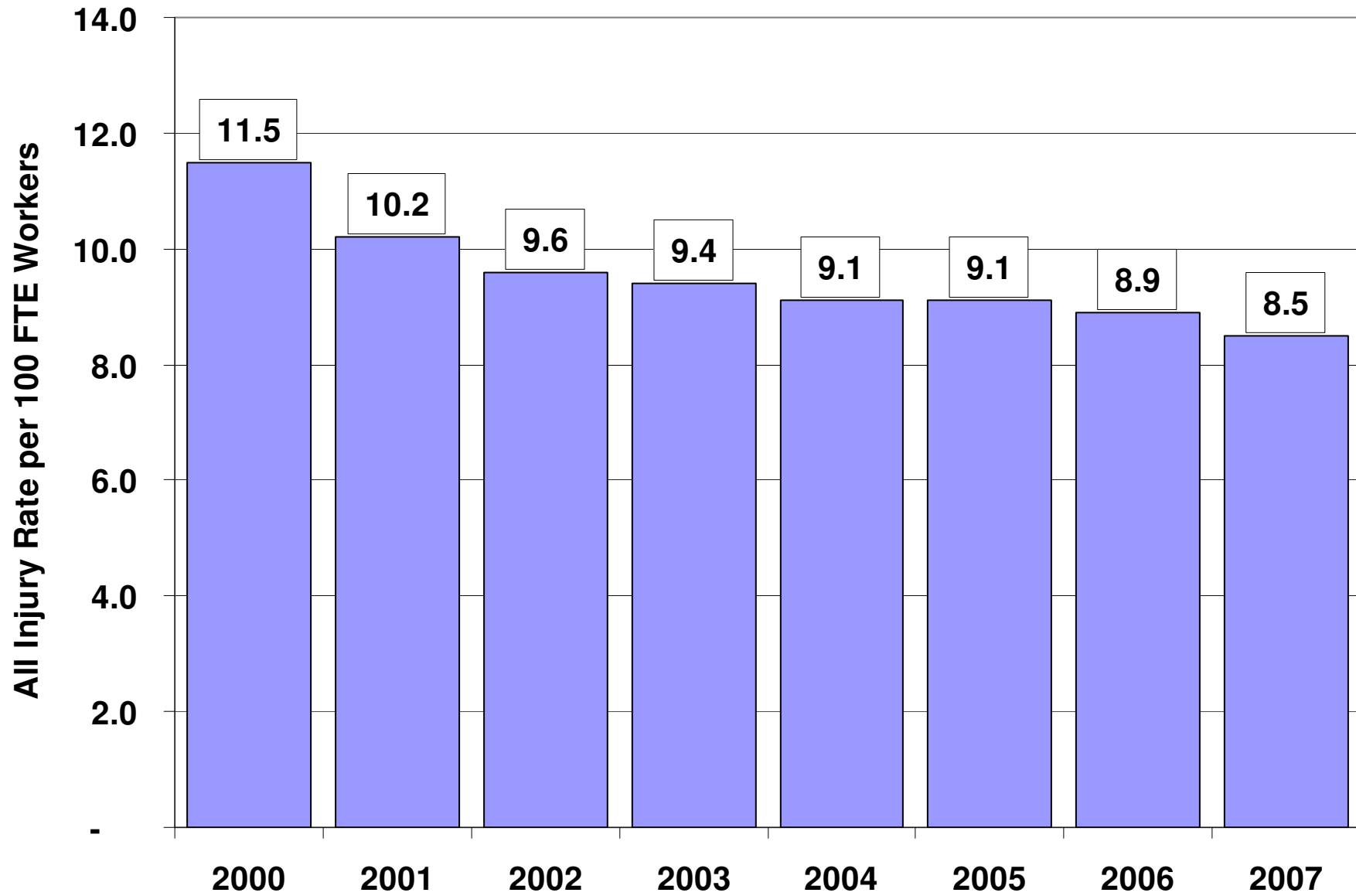
## 1.1 Time loss injury rate

Figure 1 - Manitoba Time Loss Injury Rate, 2000 to 2007



## 1.2 All Injury Rate

Figure 2 – Manitoba All Injury Rates for 2000 to 2007



### 1.3 Injury Rates by Age Group and Gender

Figure 3 - Time Loss Injury Rates by Age Group and Gender, 2007



Figure 4 - Time Loss Injury Rates by Age Group 2000 to 2007

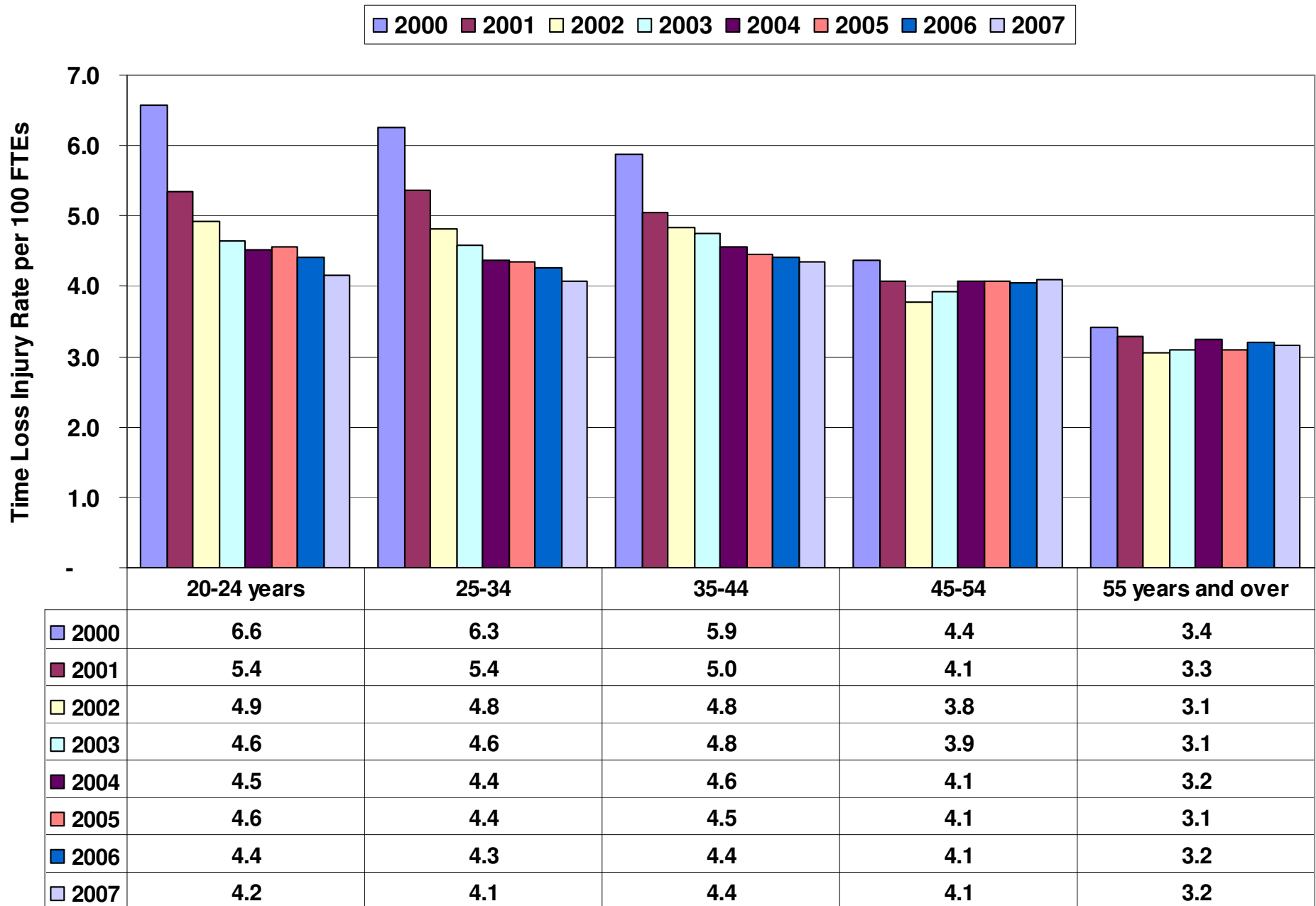


Figure 5 - Male Time Loss Injury Rates by Age Group, 2000 to 2007

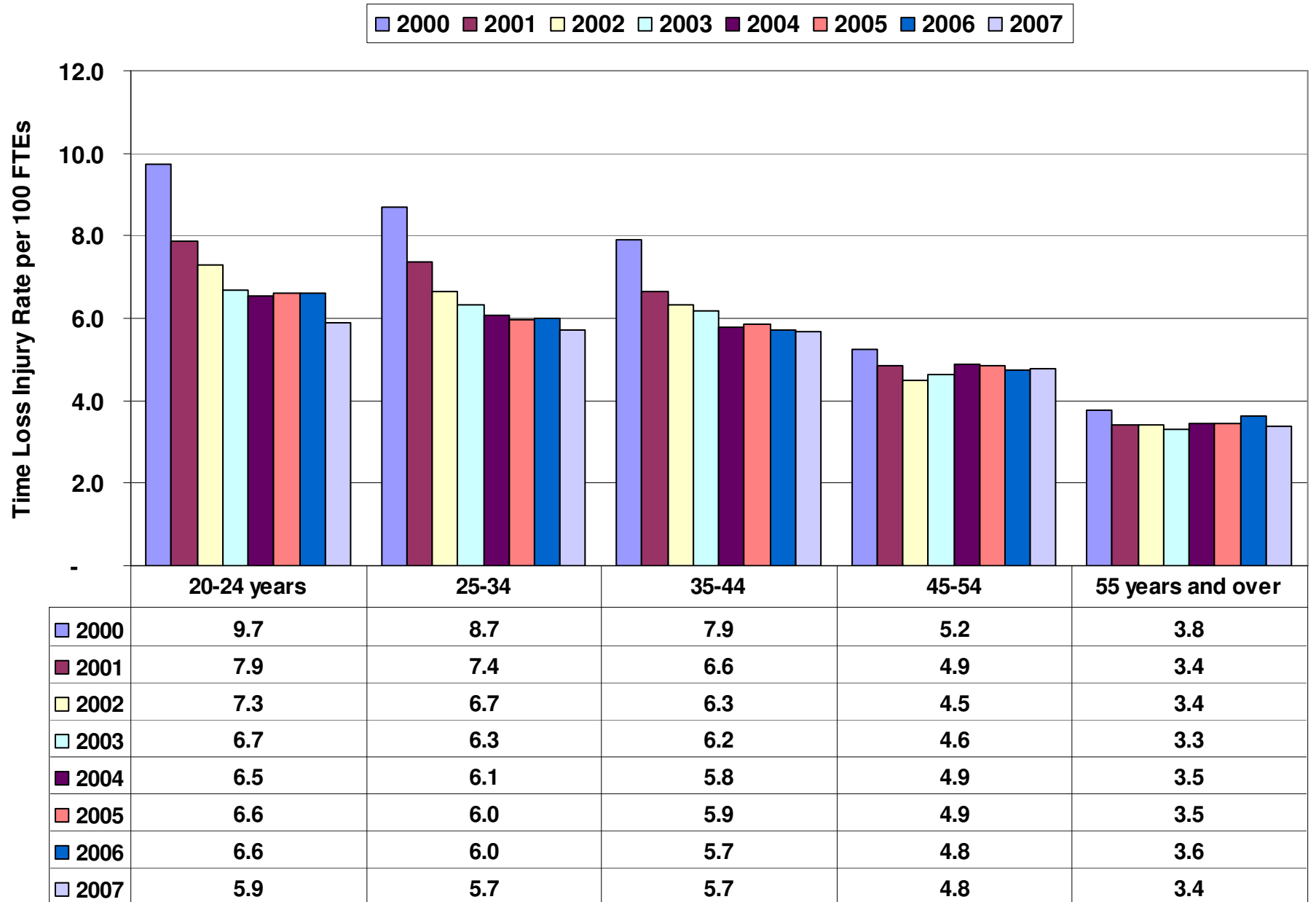
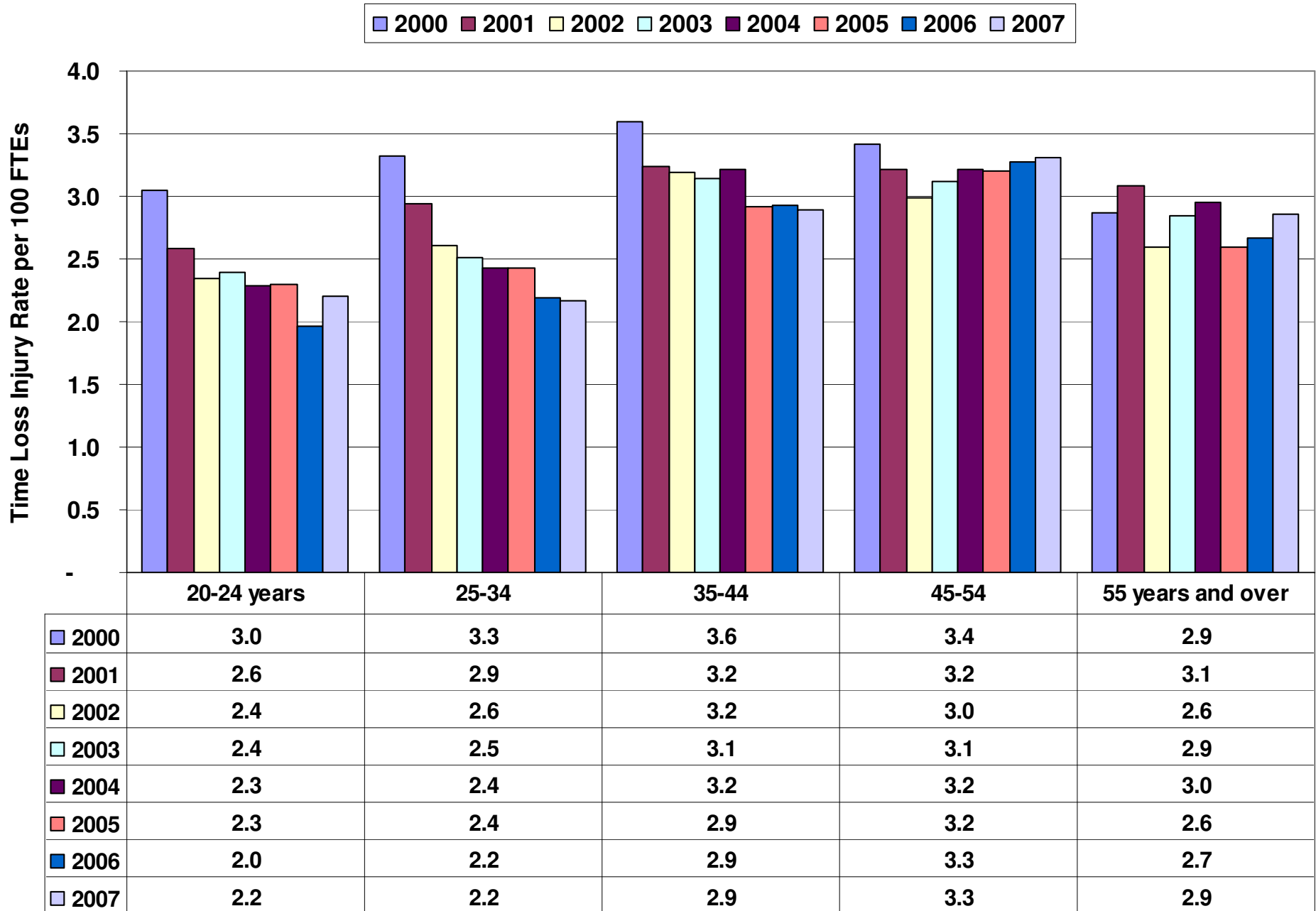


Figure 6 - Female Time Loss Injury Rates by Age Group 2000 to 2007

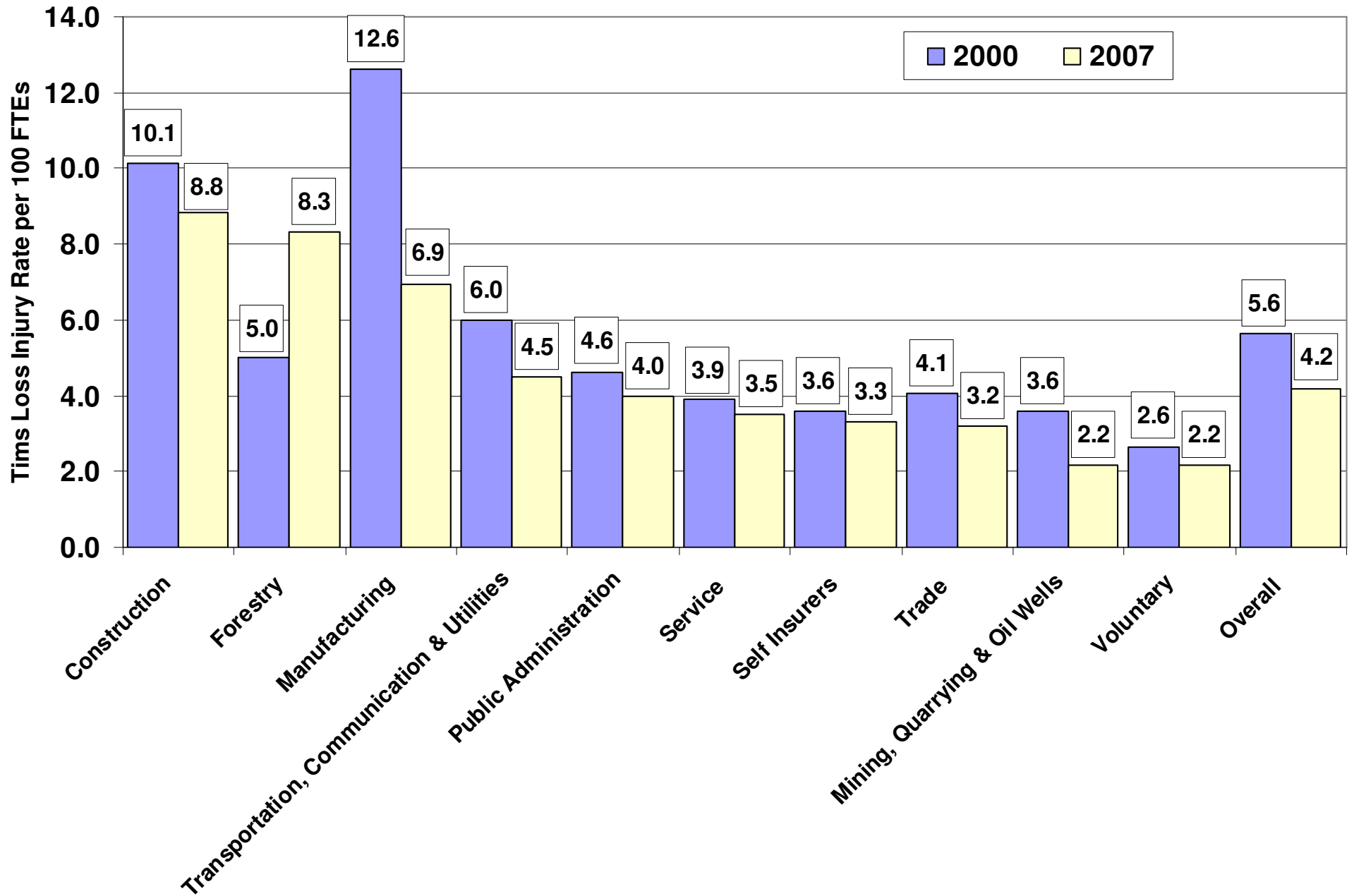


## 1.4 Industry Sector and Sub-Sector Rates

Table 1 - Time Loss Injury Rate by Major Industry Sectors and Selected Sub-Sectors, 2000 to 2007

| WCB Industry Sectors and Selected Sub-Sectors      | 2000 | 2001 | 2002 | 2003 | 2004 | 2005 | 2006 | 2007 |
|--|------|------|------|------|------|------|------|------|
| <b>Forestry</b>                                    | 5.0  | 8.3  | 8.0  | 7.3  | 6.3  | 4.8  | 4.6  | 8.3  |
| <b>Mining, Quarrying &amp; Oil Wells</b>           | 3.6  | 2.4  | 2.2  | 2.3  | 2.4  | 1.9  | 2.1  | 2.2  |
| • Mining   | 3.2  | 1.9  | 1.9  | 1.8  | 1.9  | 1.4  | 1.6  | 2.2  |
| <b>Manufacturing</b>                               | 12.6 | 10.2 | 9.3  | 8.5  | 7.4  | 7.2  | 7.1  | 6.9  |
| • Meat Processing                                  | 18.0 | 13.1 | 12.1 | 10.8 | 8.6  | 7.3  | 7.2  | 6.1  |
| • Metal Works                                      | 17.4 | 13.5 | 13.6 | 13.8 | 10.8 | 11.6 | 11.6 | 11.8 |
| • Vehicle Manufacturing                            | 29.1 | 25.0 | 16.0 | 13.9 | 10.3 | 8.6  | 7.5  | 7.5  |
| • Agricultural Implement Manufacturing             | 19.3 | 14.5 | 14.2 | 12.4 | 10.9 | 9.7  | 11.9 | 10.7 |
| • Wood Manufacturing                               | 15.8 | 12.3 | 10.2 | 8.5  | 6.3  | 5.8  | 5.5  | 4.9  |
| • Printing   | 4.4  | 3.7  | 4.4  | 3.7  | 3.8  | 3.8  | 3.3  | 2.8  |
| • Clothing Manufacturing                           | 3.7  | 3.2  | 3.4  | 3.5  | 3.5  | 2.8  | 2.5  | 2.7  |
| • Aircraft Manufacturing and Repair                | 5.3  | 5.5  | 5.1  | 3.8  | 3.3  | 2.9  | 2.9  | 2.9  |
| <b>Construction</b>                                | 10.1 | 8.5  | 8.9  | 8.7  | 8.7  | 9.4  | 9.1  | 8.8  |
| • Building Construction                            | 11.0 | 9.0  | 9.1  | 8.5  | 8.5  | 9.2  | 9.3  | 9.2  |
| • Heavy Construction                               | 7.5  | 6.8  | 7.9  | 7.6  | 7.3  | 7.4  | 6.9  | 6.9  |
| <b>Transportation, Communication &amp; Storage</b> | 6.0  | 5.1  | 4.9  | 5.1  | 5.2  | 4.4  | 4.3  | 4.5  |
| • Trucking   | 9.6  | 8.7  | 8.6  | 8.1  | 7.6  | 7.0  | 6.4  | 6.5  |
| <b>Trade</b>                                       | 4.1  | 3.9  | 3.6  | 3.5  | 3.5  | 3.3  | 3.4  | 3.2  |
| • Supermarket and Department Stores                | 3.0  | 3.1  | 2.8  | 2.7  | 2.6  | 2.9  | 2.7  | 2.5  |
| <b>Service</b>                                     | 3.9  | 4.0  | 3.9  | 3.8  | 3.8  | 3.7  | 3.6  | 3.5  |
| • Accommodation and Restaurants                    | 2.7  | 2.8  | 2.4  | 2.4  | 2.4  | 2.3  | 2.2  | 2.1  |
| • Health care                                      | 5.0  | 5.0  | 5.1  | 4.8  | 4.8  | 4.6  | 4.7  | 4.6  |
| <b>Public Administration</b>                       | 4.6  | 4.1  | 4.9  | 3.9  | 4.2  | 4.3  | 4.1  | 4.0  |
| <b>Voluntary</b>                                   | 2.6  | 2.5  | 2.3  | 2.2  | 2.5  | 2.3  | 2.4  | 2.2  |
| • Agriculture                                      | 4.8  | 4.9  | 4.5  | 5.0  | 6.6  | 5.4  | 5.2  | 5.2  |
| • Educational Institutions                         | 2.8  | 2.4  | 2.4  | 2.5  | 2.7  | 2.6  | 2.9  | 2.6  |
| <b>Self Insurers</b>                               | 3.6  | 3.0  | 2.9  | 3.0  | 3.2  | 3.3  | 3.2  | 3.3  |
| <b>Overall</b>                                     | 5.6  | 4.9  | 4.6  | 4.4  | 4.4  | 4.3  | 4.3  | 4.2  |

Figure 7 - Time Loss Injury Rate by Major Industry Sectors, 2000 and 2007



**Table 2 - All Injury Rate by WCB Industry Sectors and Selected Sub-Sectors, 2000 to 2007**

| <b>WCB Industry Sectors and Selected Sub-Sectors</b> | <b>2000</b> | <b>2001</b> | <b>2002</b> | <b>2003</b> | <b>2004</b> | <b>2005</b> | <b>2006</b> | <b>2007</b> |
|--|-------------|-------------|-------------|-------------|-------------|-------------|-------------|-------------|
| <b>Forestry</b>                                      | 10.5        | 18.3        | 22.3        | 12.3        | 11.3        | 12.5        | 10.3        | 12.6        |
| <b>Mining, Quarrying &amp; Oil Wells</b>             | 23.6        | 20.0        | 16.1        | 16.5        | 17.0        | 14.2        | 13.7        | 12.6        |
| • Mining   | 22.7        | 20.2        | 17.6        | 17.8        | 18.7        | 15.2        | 14.4        | 14.1        |
| <b>Manufacturing</b>                                 | 25.7        | 22.0        | 20.5        | 19.2        | 16.9        | 16.7        | 16.0        | 15.2        |
| • Meat Processing                                    | 52.7        | 43.5        | 42.2        | 38.3        | 28.7        | 31.0        | 25.1        | 20.2        |
| • Metal Works  | 38.8        | 31.3        | 30.1        | 29.9        | 26.4        | 26.6        | 25.4        | 25.1        |
| • Vehicle Manufacturing                              | 47.2        | 40.7        | 29.8        | 26.6        | 20.0        | 17.3        | 15.9        | 16.7        |
| • Agricultural Implement Manufacturing               | 40.1        | 31.0        | 29.7        | 29.1        | 27.0        | 24.5        | 25.9        | 23.9        |
| • Wood Manufacturing                                 | 31.3        | 27.7        | 23.8        | 19.8        | 14.5        | 14.0        | 14.2        | 12.3        |
| • Printing   | 8.6         | 6.8         | 7.9         | 8.0         | 7.3         | 7.1         | 6.4         | 5.5         |
| • Clothing Manufacturing                             | 5.8         | 5.5         | 5.6         | 5.5         | 5.2         | 5.6         | 4.6         | 4.6         |
| • Aircraft Manufacturing and Repair                  | 9.9         | 10.5        | 9.7         | 6.9         | 6.5         | 5.9         | 6.2         | 5.2         |
| <b>Construction</b>                                  | 20.4        | 17.0        | 17.3        | 17.2        | 16.9        | 17.9        | 17.7        | 17.7        |
| • Building Construction                              | 22.1        | 18.1        | 17.5        | 17.0        | 16.5        | 17.4        | 17.8        | 18.4        |
| • Heavy Construction                                 | 15.3        | 13.2        | 16.2        | 14.7        | 14.8        | 14.9        | 14.4        | 13.8        |
| <b>Transportation, Communication &amp; Storage</b>   | 10.5        | 8.9         | 8.3         | 8.9         | 8.7         | 7.3         | 7.1         | 7.3         |
| • Trucking   | 15.4        | 13.9        | 13.0        | 12.8        | 11.9        | 10.6        | 9.8         | 10.1        |
| <b>Trade</b>   | 8.2         | 7.8         | 7.2         | 7.5         | 7.2         | 7.0         | 7.1         | 6.6         |
| • Supermarket and Department Stores                  | 6.1         | 6.1         | 5.7         | 5.7         | 5.5         | 6.0         | 5.8         | 5.2         |
| <b>Service</b>                                       | 7.3         | 7.3         | 7.1         | 7.0         | 7.4         | 7.1         | 7.1         | 6.6         |
| • Accommodation and Restaurants                      | 6.4         | 6.3         | 5.5         | 5.4         | 5.5         | 5.3         | 5.1         | 4.5         |
| • Health care  | 8.6         | 8.6         | 8.7         | 8.6         | 8.9         | 8.4         | 8.7         | 8.3         |
| <b>Public Administration</b>                         | 10.7        | 9.0         | 10.4        | 9.6         | 8.7         | 9.6         | 10.2        | 9.6         |
| <b>Voluntary</b>                                     | 5.2         | 4.8         | 4.6         | 4.8         | 5.1         | 4.7         | 5.0         | 4.6         |
| • Agriculture <sup>1</sup>                           | 9.4         | 8.9         | 8.3         | 10.0        | 12.7        | 10.1        | 10.8        | 9.6         |
| • Educational Institutions                           | 5.3         | 4.6         | 4.9         | 5.2         | 5.3         | 5.2         | 5.3         | 5.6         |
| <b>Self Insurers</b>                                 | 8.0         | 6.9         | 6.8         | 6.7         | 6.9         | 6.9         | 6.7         | 6.7         |
| <b>Overall<sup>2</sup></b>                           | 11.5        | 10.2        | 9.6         | 9.4         | 9.1         | 9.1         | 8.9         | 8.5         |

Source: WCB Claim and Employer Databases

<sup>1</sup> Note: The WCB covers only a small proportion of the agriculture and education sectors so that most work-related injuries are not reported to the WCB.

<sup>2</sup> Totals may not add as a few injuries or illnesses do not have their sector coded.

Figure 8 - All Injury Rate by Major Industry Sectors, 2000 and 2007

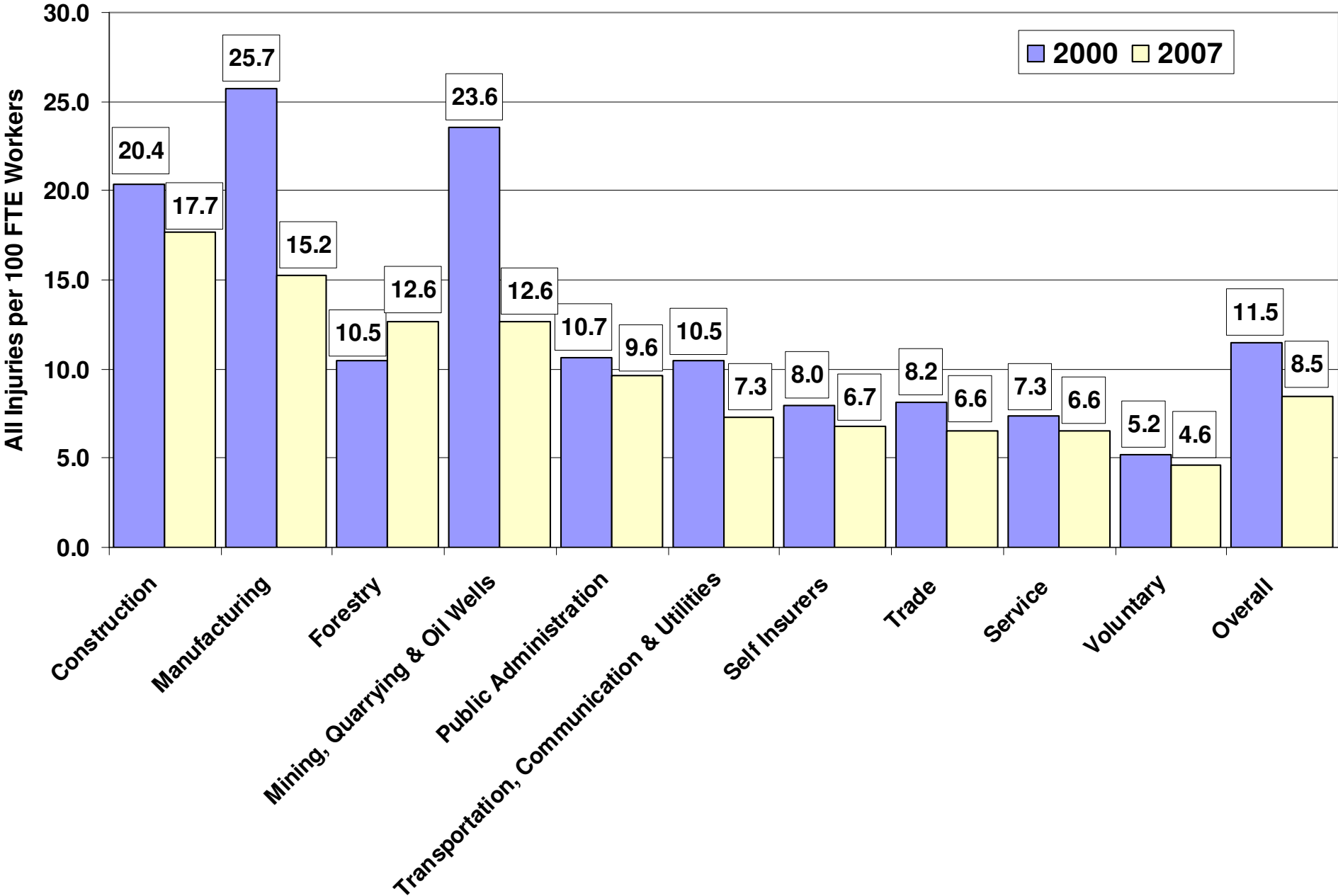


Figure 9 – All Injury Rate and Time Loss Injury Rate, Selected Manufacturing Sub-Sectors, 2007

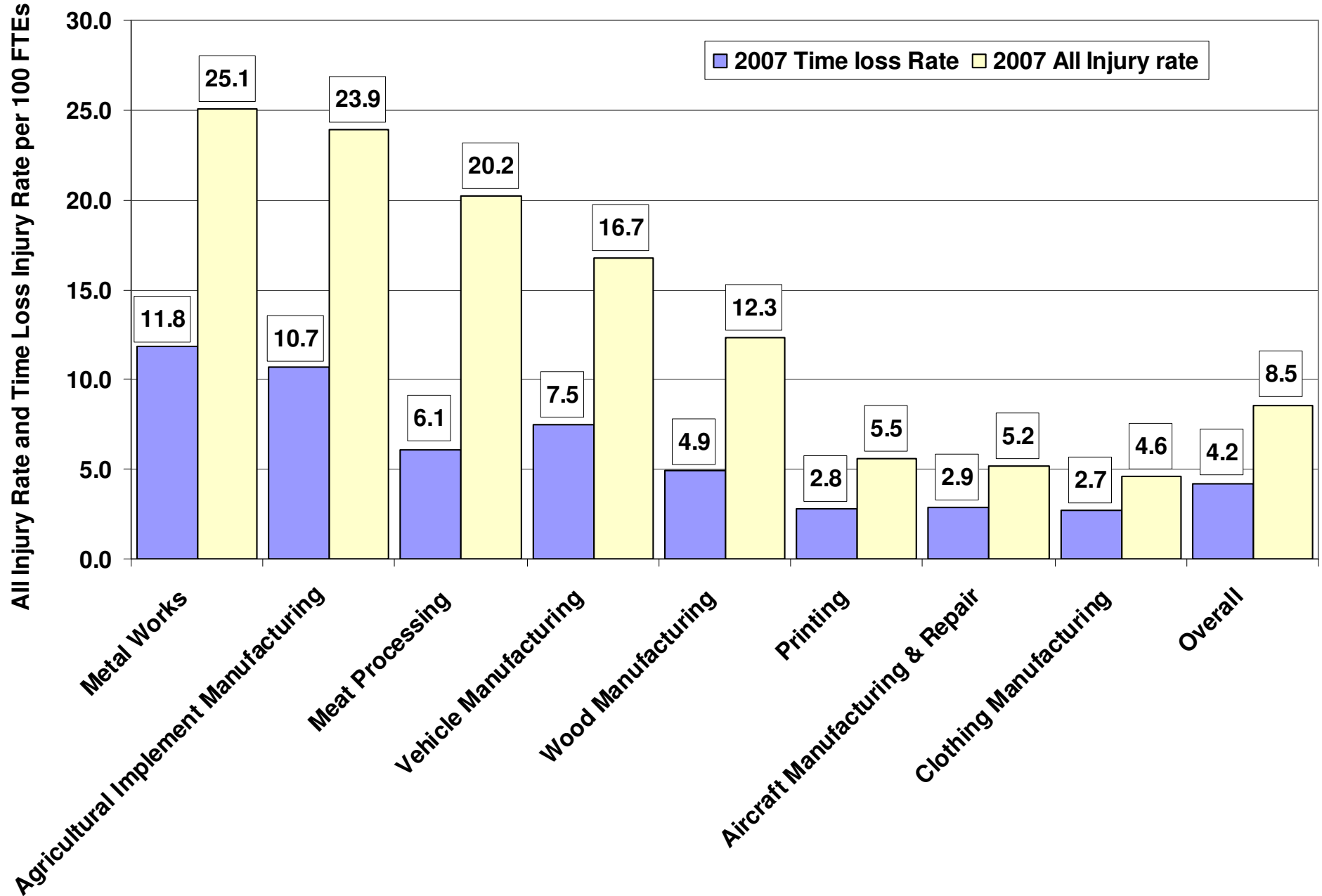
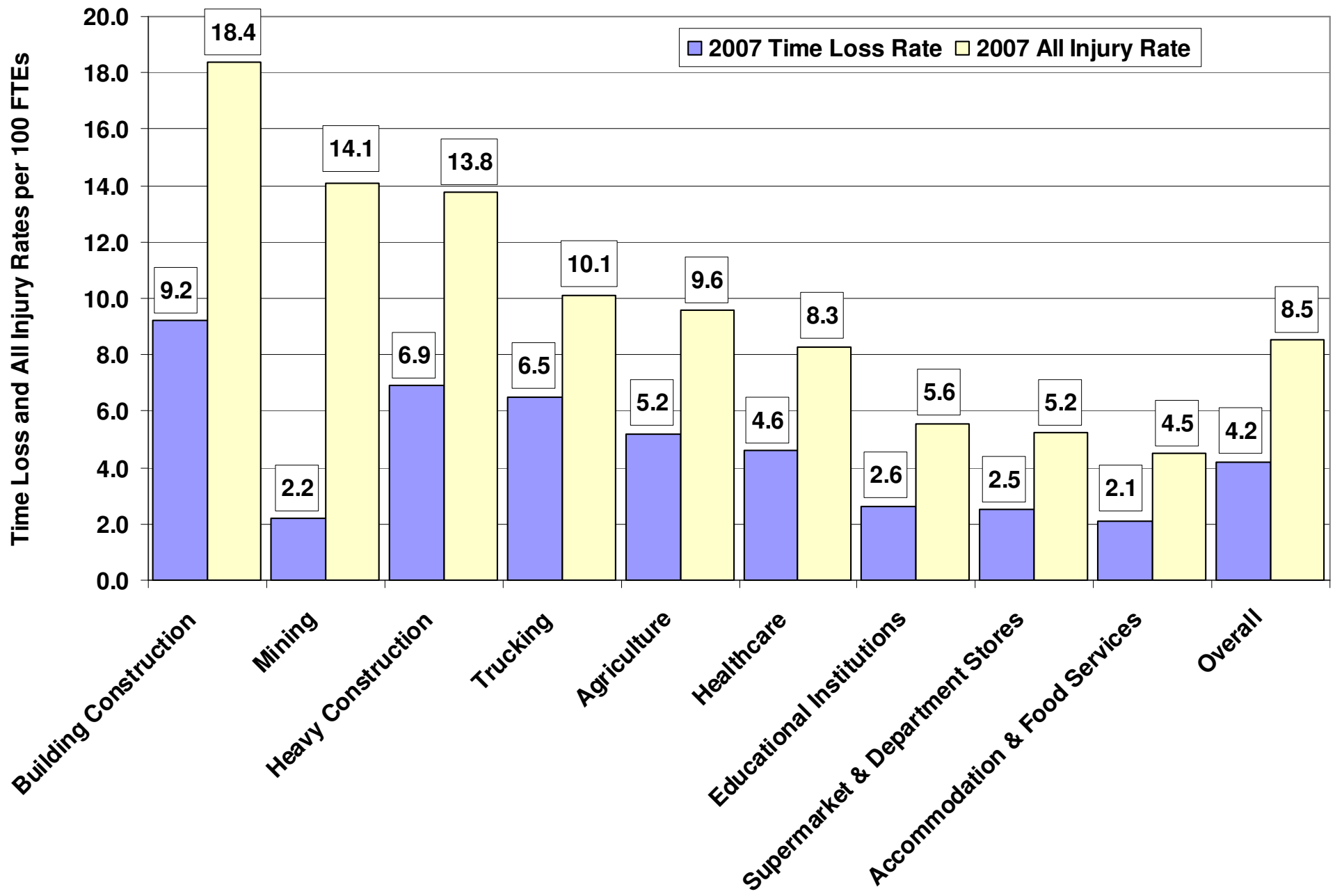


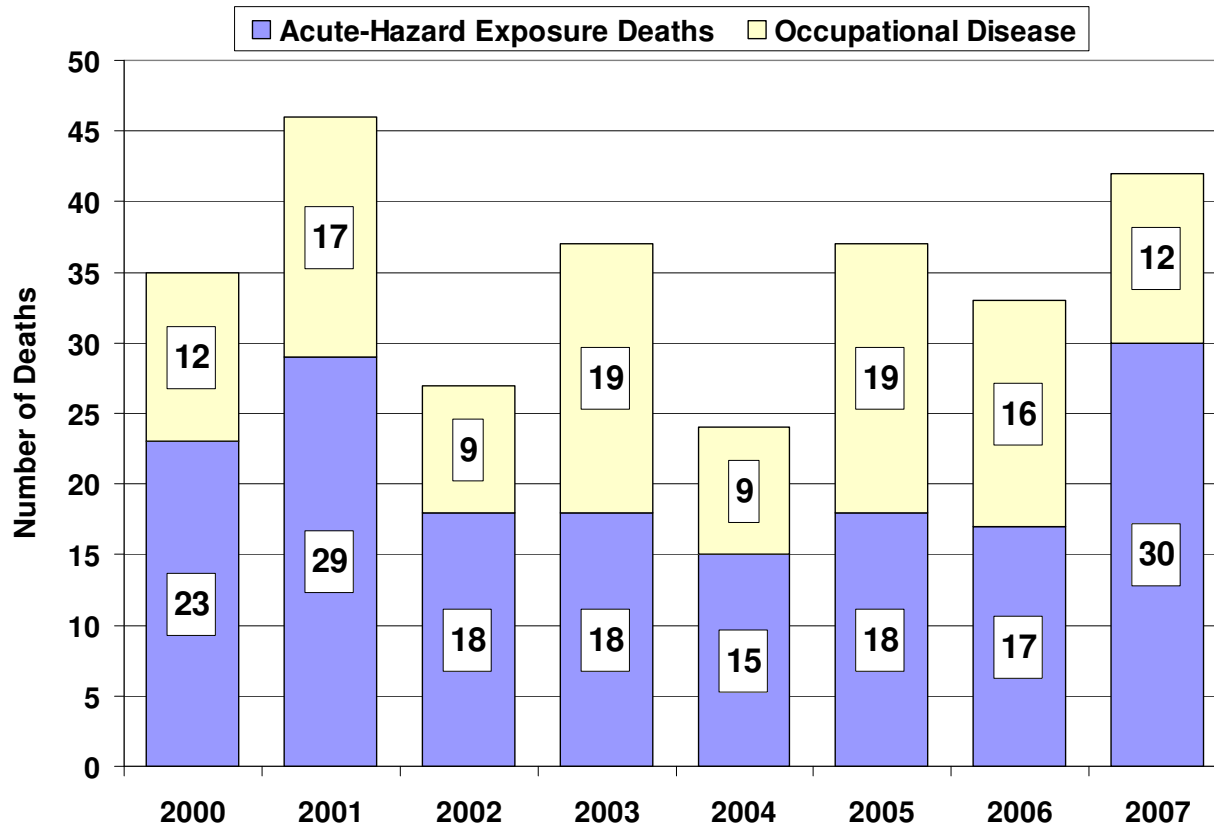
Figure 10 - All Injury Rate and Time Loss Injury Rate, Other Industry Sub-Sectors, 2007



## 2.0 WORKPLACE FATALITIES

### 2.1 Acute-Hazard<sup>3</sup> and Occupational Disease<sup>4</sup> Fatalities

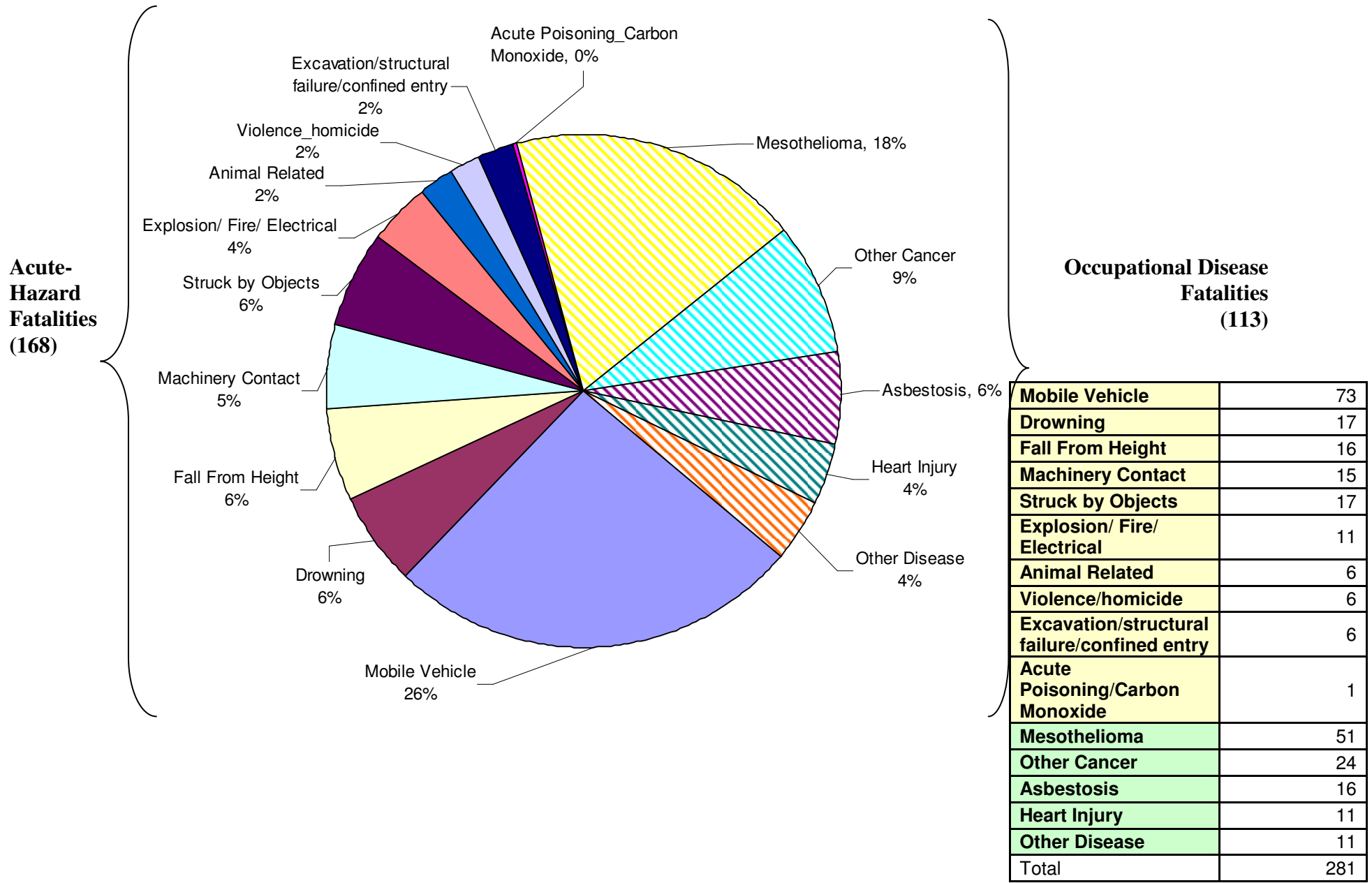
Figure 11 - Acute-Hazard and Occupational Disease Fatalities, 2000-2007



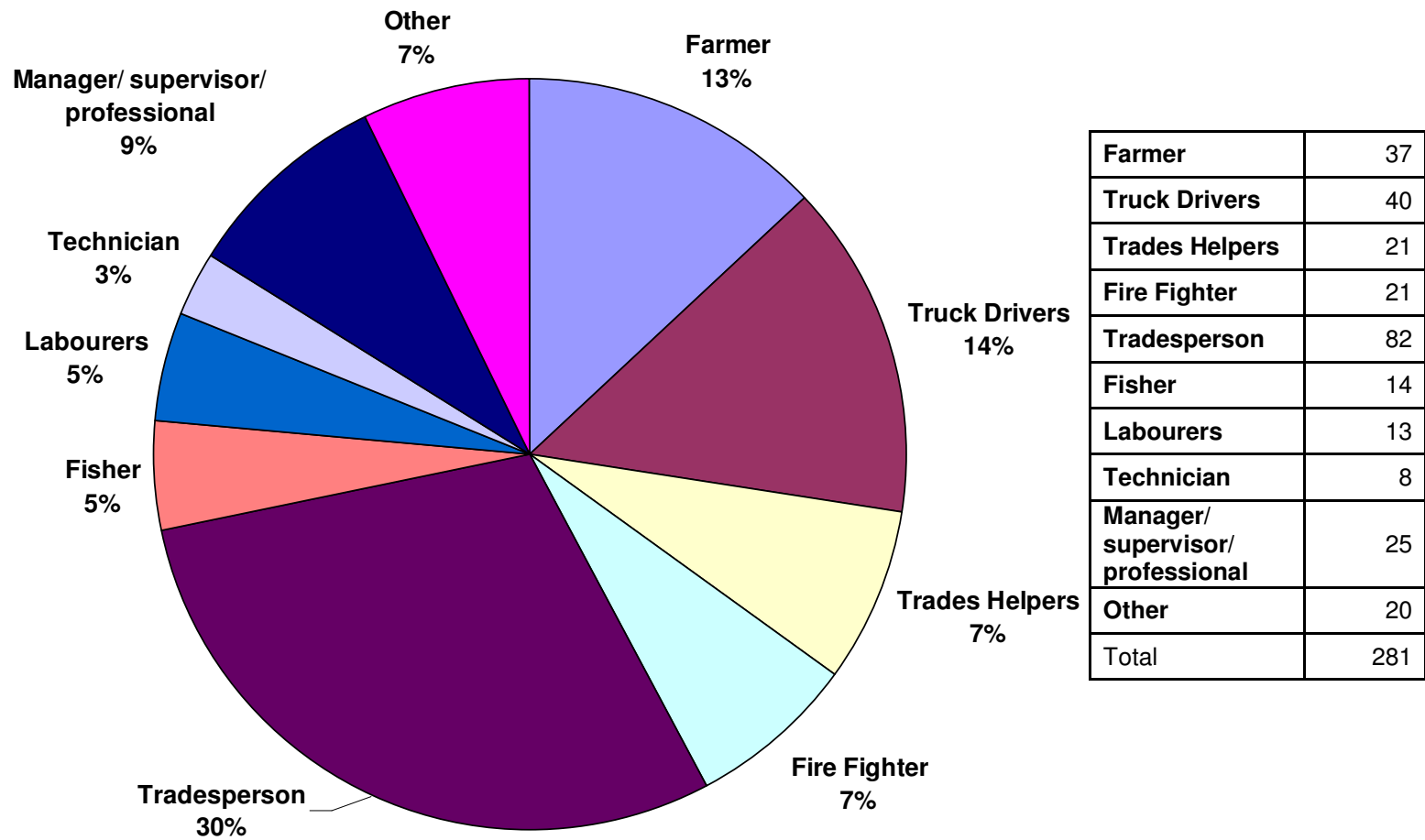
<sup>3</sup>An acute-hazard exposure death is a work-related fatality that occurs when a worker is injured or exposed to a significant amount of a hazardous agent. In such cases, the worker dies immediately or soon after the exposure. This category includes such deaths as falls from height, drowning and highway crashes. It excludes deaths due to infectious agents. Acute-hazard fatalities include fatalities accepted by the Manitoba WCB, and those identified as work-related by the Chief Medical Examiner's Office, the RCMP, and the Workplace Safety and Health Division. These fatalities are recorded by year of death.

<sup>4</sup> An occupational disease death is a work-related fatality that occurs when a worker develops a disease as the result of a long-term exposure to a hazardous substance or contact with a disease-causing agent. In such cases, the worker normally dies after months or years have passed. This category also includes traumatic or single events that have precipitated a functional failure such as a myocardial infarction. The fatalities are organized by year of acceptance by the WCB. Only those occupational disease fatalities accepted by the WCB are included in this report. No other body tracks deaths outside of the WCB system that may be work-related.

**Figure 12 - Acute-Hazard and Occupational Disease Fatalities, 2000 to 2007 by Cause**

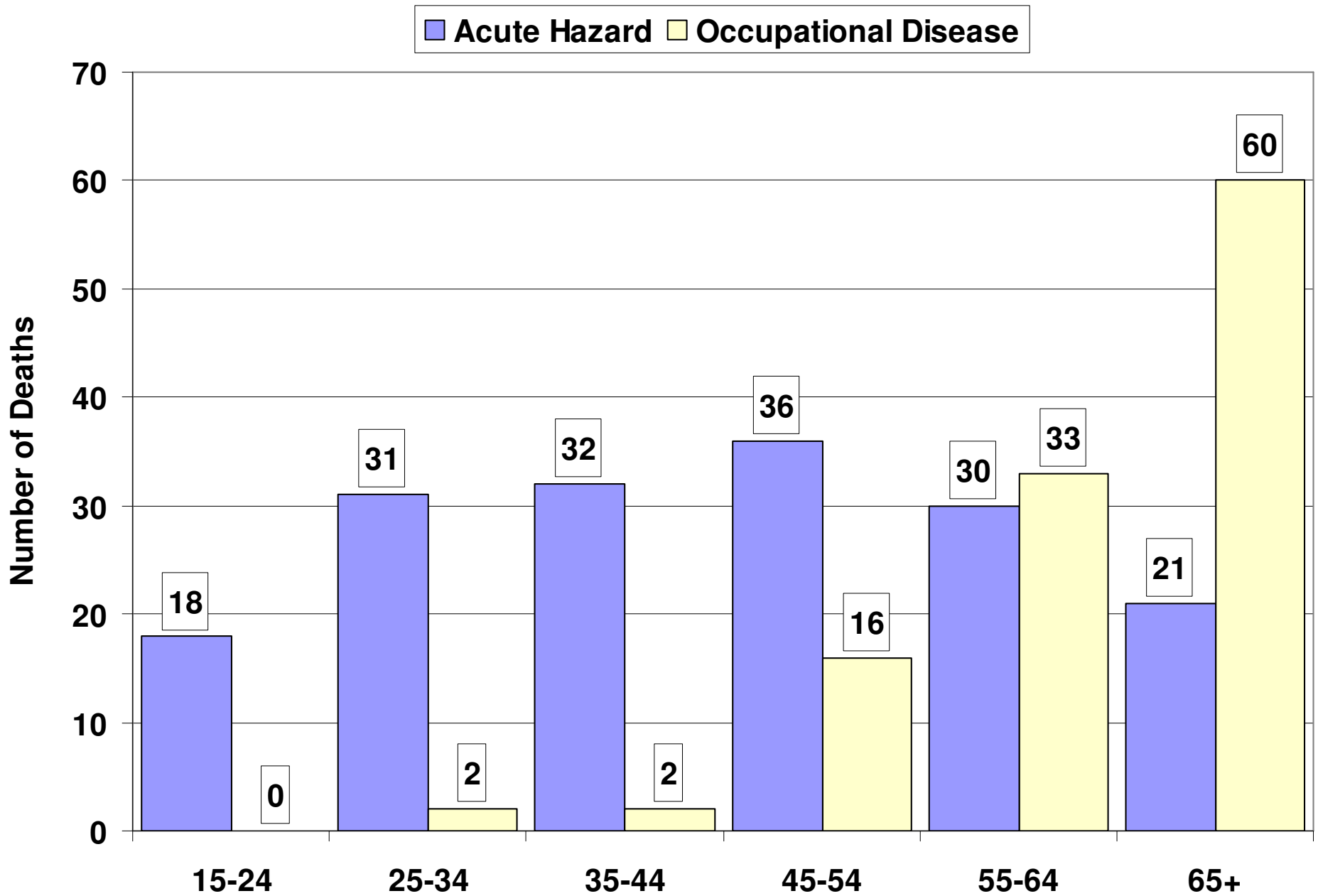


**Figure 13 - Fatalities in the Workplace (Acute Hazard and Occupational Disease) by Occupation, 2000 to 2007**



|                                   |     |
|-----------------------------------|-----|
| Farmer                            | 37  |
| Truck Drivers                     | 40  |
| Trades Helpers                    | 21  |
| Fire Fighter                      | 21  |
| Tradesperson                      | 82  |
| Fisher                            | 14  |
| Labourers                         | 13  |
| Technician                        | 8   |
| Manager/ supervisor/ professional | 25  |
| Other                             | 20  |
| Total                             | 281 |

Figure 14 - Distribution of Acute-Hazard and Occupational Disease Fatalities by Age, 2000 to 2007



## 2.2 Acute-Hazard Fatalities

Table 3- Acute-Hazard Fatalities, 2007

| Acute-Hazard Fatalities   |   |                            |                    |
|---------------------------|---|----------------------------|--------------------|
| Month of Death (2007)     | Industry                                    | Circumstances              | Occupation         |
| August, 2006 <sup>5</sup> | Public Administration                       | Motor Vehicle Incident     | Labourer           |
| January                   | Service                                     | Crushed by Bulldozer       | Equipment Operator |
| February                  | Public Administration                       | Burned in a Fire/Explosion | Fire Fighter       |
| February                  | Public Administration                       | Burned in a Fire/Explosion | Fire Fighter       |
| February                  | Agriculture                                 | Crushed by Tractor         | Farmer (Child)     |
| February                  | Agriculture                                 | Crushed by a Cow           | Farmer             |
| March                     | Construction                                | Motor Vehicle Incident     | Truck Driver       |
| March                     | Construction                                | Motor Vehicle Incident     | Apprentice         |
| April                     | Construction                                | Buried in Pile of Gravel   | Loader Operator    |
| April                     | Public Administration                       | Fell Down Stairs           | Janitor            |
| April                     | Public Administration                       | Homicide                   | Ferry Operator     |
| May                       | Transportation, Communication and Utilities | Crushed by Rail Car        | Engineer/Conductor |
| May                       | Transportation, Communication and Utilities | Motor Vehicle Incident     | Truck Driver       |
| July                      | Transportation, Communication and Utilities | Motor Vehicle Incident     | Truck Driver       |
| July                      | Construction                                | Struck in Head             | Sandblaster        |
| July                      | Transportation, Communication and Utilities | Motor Vehicle Incident     | Truck Driver       |
| August                    | Transportation, Communication and Utilities | Fall from Height           | Technician         |
| August                    | Transportation, Communication and Utilities | Helicopter Crash           | Pilot              |

<sup>5</sup> Fatalities are counted in the year of acceptance. With motor vehicle deaths, acceptance may be delayed as there is an option to make a claim for fatality benefits from either the WCB or Manitoba Public Insurance. The claim cannot be counted until the decision has been made by the worker's estate.

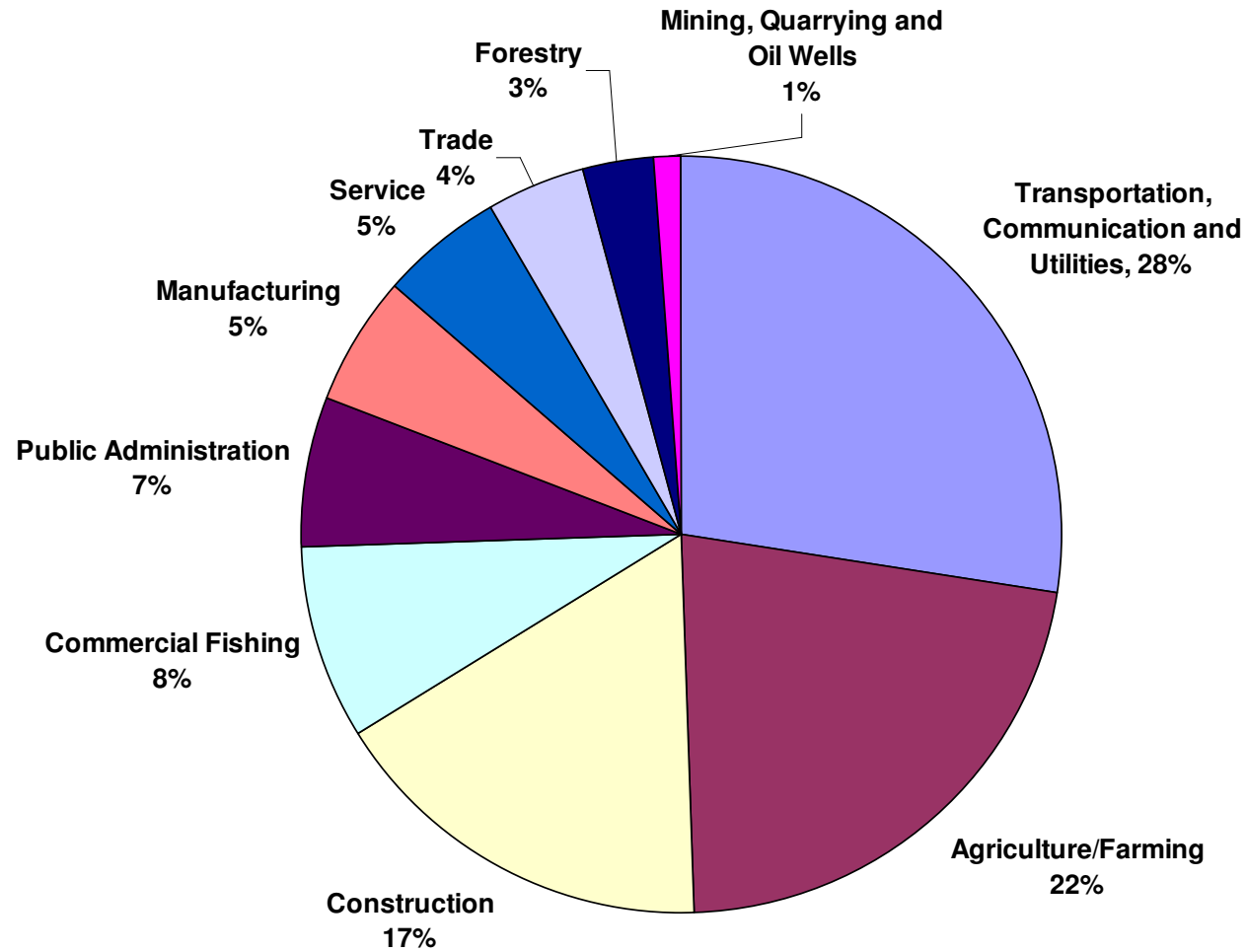
| <b>Acute-Hazard Fatalities</b> |   |                        |                   |
|--------------------------------|---|------------------------|-------------------|
| <b>Month of Death (2007)</b>   | <b>Industry</b>                             | <b>Circumstances</b>   | <b>Occupation</b> |
| August                         | Agriculture                                 | Machinery Contact      | Farmer            |
| August                         | Public Administration                       | Boom Truck Incident    | Skilled Labourer  |
| September                      | Agriculture                                 | Machinery Contact      | Farmer            |
| September                      | Construction                                | Motor Vehicle Incident | Skilled Labourer  |
| September                      | Construction                                | Motor Vehicle Incident | Skilled Labourer  |
| September                      | Forestry                                    | Boom Truck Incident    | Tree Trimmer      |
| September                      | Transportation, Communication and Utilities | Motor Vehicle Incident | Tow Truck Driver  |
| October                        | Construction                                | Fall from Height       | Service Manager   |
| October                        | Agriculture                                 | Struck by Objects      | Farmer            |
| October                        | Construction                                | Fall from Height       | Roofer            |
| October                        | Agriculture                                 | Struck by Objects      | Farmer            |
| October                        | Transportation, Communication and Utilities | Motor Vehicle Incident | Truck Driver      |

**Table 4 - Acute-Hazard Exposure Fatalities by Industry, 2000 to 2007**

| <b>Sector</b>   | <b>2000</b> | <b>2001</b> | <b>2002</b> | <b>2003</b> | <b>2004</b> | <b>2005</b> | <b>2006</b> | <b>2007</b> |
|---|-------------|-------------|-------------|-------------|-------------|-------------|-------------|-------------|
| Agriculture/Farming   | 8           | 3           | 1           | 6           | 4           | 5           | 4           | 6           |
| Forestry  | 0           | 1           | 1           | 0           | 0           | 2           | 0           | 1           |
| Commercial Fishing  | 0           | 3           | 2           | 1           | 4           | 4           | 0           | 0           |
| Mining, Quarrying and Oil Wells   | 1           | 1           | 0           | 0           | 0           | 0           | 0           | 0           |
| Construction  | 2           | 3           | 7           | 2           | 2           | 1           | 3           | 8           |
| Manufacturing   | 2           | 0           | 1           | 2           | 0           | 1           | 3           | 0           |
| Transportation, Communication and Storage (Includes inter-provincial trucking and rail and air transport) | 8           | 15          | 2           | 3           | 1           | 4           | 4           | 9           |
| Trade   | 0           | 1           | 1           | 0           | 3           | 0           | 2           | 0           |
| Service <sup>6</sup>  | 0           | 0           | 3           | 3           | 1           | 1           | 1           | 0           |
| Public Administration (includes RCMP, prisons, federal agencies)  | 2           | 2           | 0           | 1           | 0           | 0           | 0           | 6           |
| <b>Total for Acute-Hazard Exposure Fatalities</b>   | <b>23</b>   | <b>29</b>   | <b>18</b>   | <b>18</b>   | <b>15</b>   | <b>18</b>   | <b>17</b>   | <b>30</b>   |

<sup>6</sup> Service includes schools, healthcare, security guards

Figure 15 - Acute-Hazard Fatalities by Major Industry Sectors, 2000 to 2007



|   |            |
|---|------------|
| Transportation, Communication and Utilities | 46         |
| Agriculture/Farming                         | 37         |
| Construction                                | 28         |
| Commercial Fishing                          | 14         |
| Public Administration                       | 11         |
| Manufacturing                               | 9          |
| Service                                     | 9          |
| Trade                                       | 7          |
| Forestry                                    | 5          |
| Mining, Quarrying and Oil Wells             | 2          |
| <b>Total</b>                                | <b>168</b> |

### 2.3 Occupations Disease Fatalities

Table 5 - Occupational Disease Fatalities Accepted by the WCB, 2000 to 2007

| Disease Conditions | 2000      | 2001      | 2002     | 2003      | 2004     | 2005      | 2006      | 2007      |
|--------------------|-----------|-----------|----------|-----------|----------|-----------|-----------|-----------|
| Asbestosis         | 2         | 3         | 1        | 3         | 1        | 3         | 2         | 1         |
| Mesothelioma       | 4         | 11        | 7        | 8         | 7        | 8         | 4         | 2         |
| Other Cancers      | 2         | 1         | 1        | 7         | 0        | 4         | 6         | 3         |
| Heart Injury       | 2         | 1         | 0        | 1         | 1        | 0         | 3         | 3         |
| Other Disease      | 2         | 1         | 0        | 0         | 0        | 4         | 1         | 3         |
| <b>Total</b>       | <b>12</b> | <b>17</b> | <b>9</b> | <b>19</b> | <b>9</b> | <b>19</b> | <b>16</b> | <b>12</b> |

**Table 6 Occupational Disease Fatalities 2007**

| <b>Occupational Disease Fatalities</b> |   |                                   |                    |
|--|---|-----------------------------------|--------------------|
| <b>Date of Death</b>                   | <b>Industry</b>                             | <b>What Happened - Disease</b>    | <b>Occupation</b>  |
| July 2005                              | Transportation, Communication and Utilities | Hearing – Post Traumatic Stress   | Equipment Operator |
| November 2005                          | Mining                                      | Hurt Back - Post Traumatic Stress | Miner              |
| April 2006                             | Public Administration                       | Other Cancer                      | Fire Fighter       |
| June 2006                              | Public Administration                       | Other Cancer                      | Fire Fighter       |
| September 2007                         | Trade                                       | Heart Injury                      | General Manager    |
| October 2006                           | Public Administration                       | Mesothelioma                      | Carpenter          |
| April 2007                             | Public Administration                       | Other Cancer                      | Fire Fighter       |
| February 2007                          | Transportation, Communication and Utilities | Heart Injury                      | Truck Driver       |
| April 2007                             | Construction                                | Mesothelioma                      | Insulator          |
| June 2007                              | Public Administration                       | Heart Injury                      | Fire Fighter       |
| June 2007                              | Construction                                | Asbestosis                        | Carpenter          |
| August 2007                            | Trade                                       | Chronic Obstructive Lung Disease  | Grain Buyer        |

### 3.0 WORKPLACE INJURY AND ILLNESS ANALYSIS

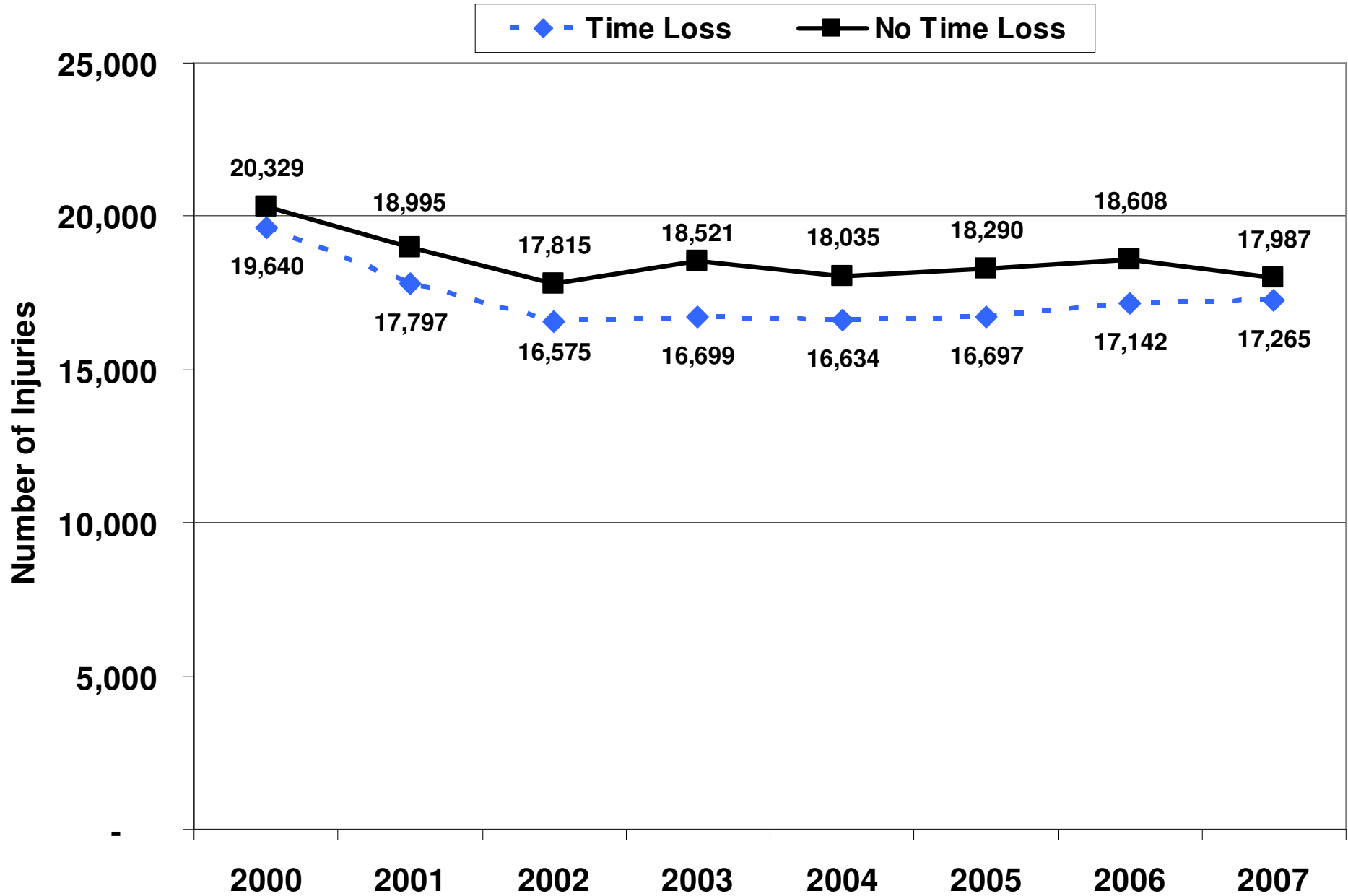
#### 3.1 Time Loss and No time Loss injuries

Table 7 – Notified and Accepted Time Loss and No Time Loss Injuries, 2000 to 2007

| Type of Injury            | Reported to WCB and Accepted |               |               |               |               |               |               |               |
|---------------------------|------------------------------|---------------|---------------|---------------|---------------|---------------|---------------|---------------|
|                           | 2000                         | 2001          | 2002          | 2003          | 2004          | 2005          | 2006          | 2007          |
| Time Loss Injuries        | 19,640                       | 17,797        | 16,575        | 16,699        | 16,634        | 16,697        | 17,142        | 17,265        |
| No Time Loss Injuries     | 20,329                       | 18,995        | 17,815        | 18,521        | 18,035        | 18,290        | 18,608        | 17,987        |
| <b>Total All Injuries</b> | <b>39,969</b>                | <b>36,792</b> | <b>34,390</b> | <b>35,220</b> | <b>34,669</b> | <b>34,987</b> | <b>35,750</b> | <b>35,252</b> |

Note: The data used to calculate the annual injury rates includes injuries where the WCB is notified of the claim and it is accepted in the particular year, regardless of the year of injury.

Figure 16 - Trends in Time Loss and No Time Loss Injuries 2000-2007



### 3.2 Accepted Injuries by Age Group

Table 8- Injuries by Age Group, 2000 to 2007

| Age Group        | Year of Injury or Illness |               |               |               |               |               |               |               |
|------------------|---------------------------|---------------|---------------|---------------|---------------|---------------|---------------|---------------|
|                  | 2000                      | 2001          | 2002          | 2003          | 2004          | 2005          | 2006          | 2007          |
| <b>15-24</b>     | 7,418                     | 6,563         | 6,031         | 6,072         | 5,927         | 6,044         | 6,037         | 5,969         |
| <b>25-34</b>     | 10,306                    | 9,087         | 8,175         | 8,116         | 7,848         | 7,901         | 7,929         | 7,546         |
| <b>35-44</b>     | 11,299                    | 10,387        | 9,579         | 9,620         | 8,938         | 8,686         | 8,645         | 8,196         |
| <b>45-54</b>     | 7,141                     | 7,142         | 6,902         | 7,425         | 7,723         | 7,924         | 8,322         | 8,425         |
| <b>55+</b>       | 2,978                     | 3,142         | 3,161         | 3,575         | 3,815         | 4,067         | 4,401         | 4,613         |
| <b>Not Coded</b> | 827                       | 471           | 542           | 412           | 418           | 365           | 416           | 503           |
| <b>Total</b>     | <b>39,969</b>             | <b>36,792</b> | <b>34,390</b> | <b>35,220</b> | <b>34,669</b> | <b>34,987</b> | <b>35,750</b> | <b>35,252</b> |

Figure 17 - Proportion of All Injuries and Employment by Age Group, 2007

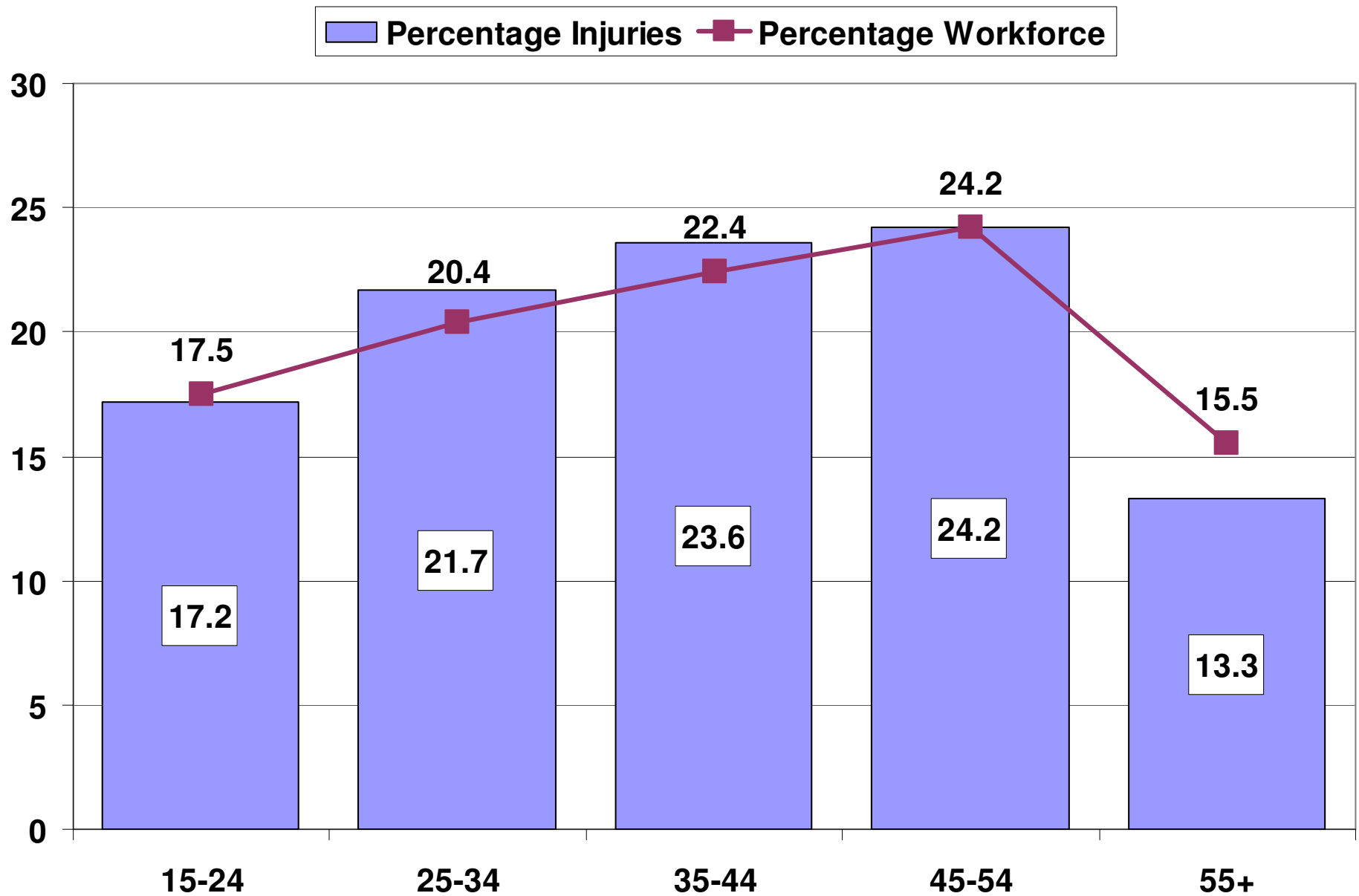
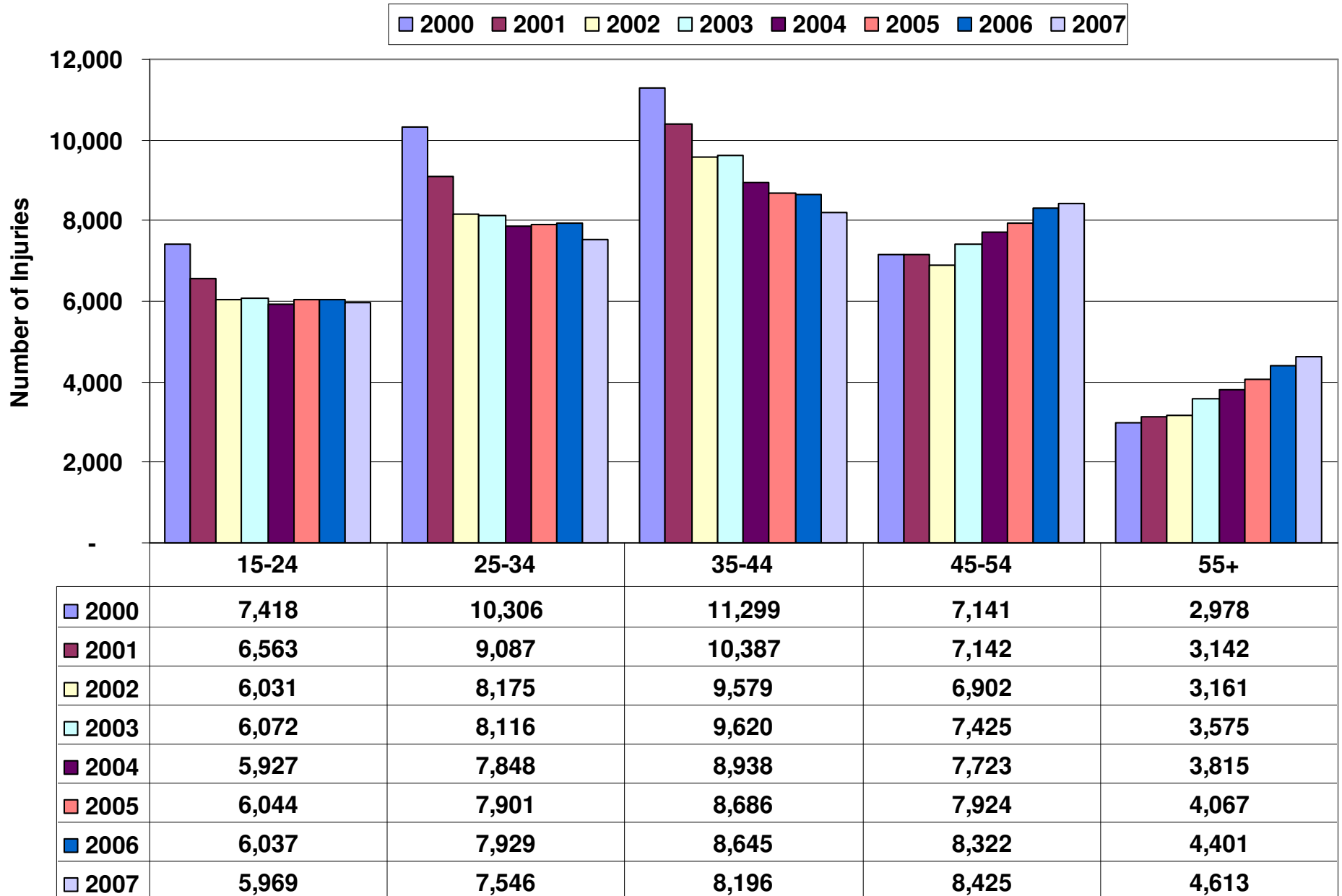


Figure 18 - All Injuries by Age Group, 2000 to 2007

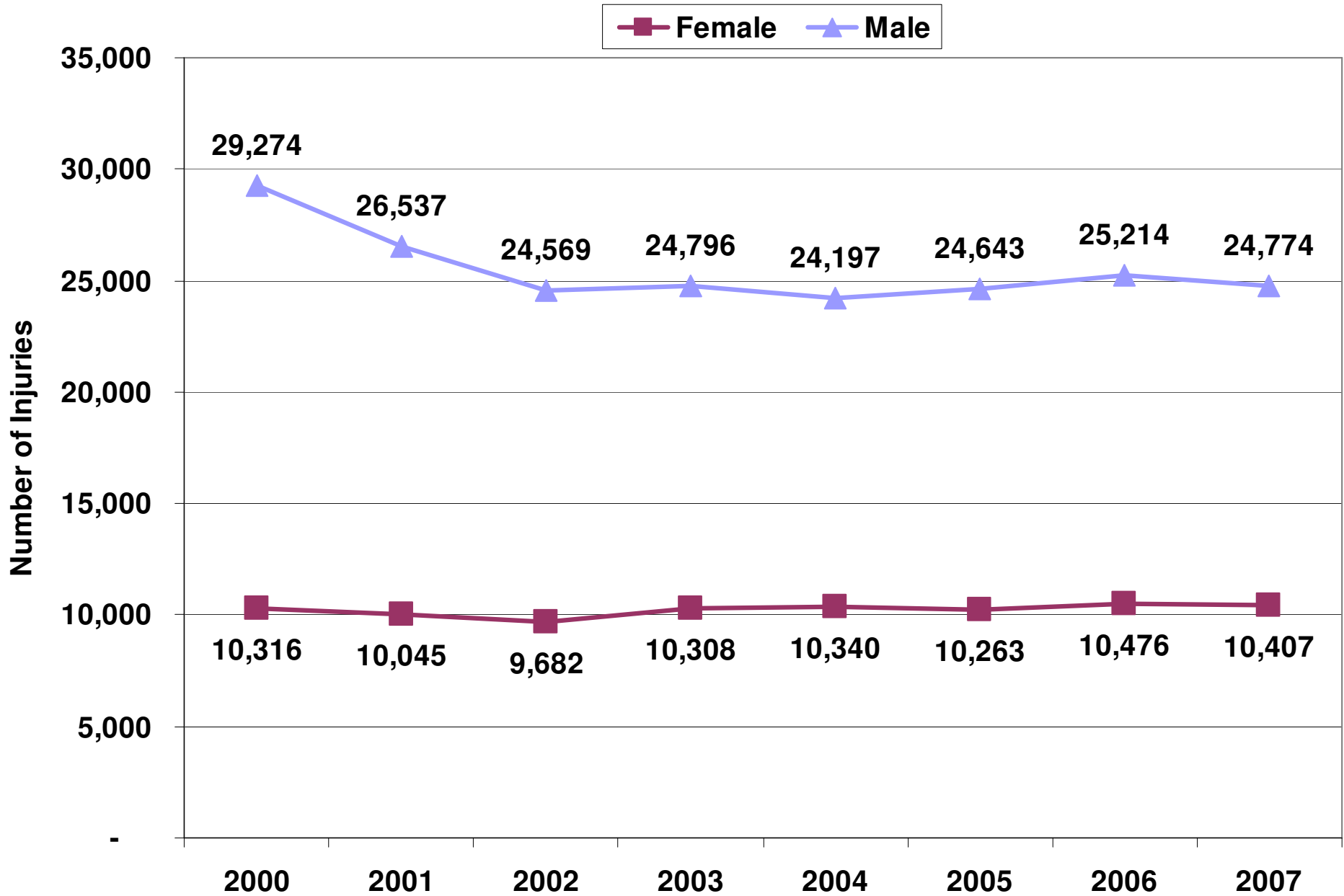


### 3.3 Accepted Injuries by Gender

Table 9 - Injuries by Gender, 2000 to 2007

| Gender                     | Year of Injury or Illness |               |               |               |               |               |               |               |
|----------------------------|---------------------------|---------------|---------------|---------------|---------------|---------------|---------------|---------------|
|                            | 2000                      | 2001          | 2002          | 2003          | 2004          | 2005          | 2006          | 2007          |
| Female                     | 10,316                    | 10,045        | 9,682         | 10,308        | 10,340        | 10,263        | 10,476        | 10,407        |
| Male                       | 29,274                    | 26,537        | 24,569        | 24,796        | 24,197        | 24,643        | 25,214        | 24,774        |
| Gender Unspecified         | 379                       | 210           | 139           | 116           | 132           | 81            | 60            | 71            |
| <b>Total</b>               | <b>39,969</b>             | <b>36,792</b> | <b>34,390</b> | <b>35,220</b> | <b>34,669</b> | <b>34,987</b> | <b>35,750</b> | <b>35,252</b> |
| Percentage Female Injuries | 25.8%                     | 27.3%         | 28.2%         | 29.3%         | 29.8%         | 29.3%         | 29.3%         | 29.5%         |

Figure 19 - Injuries by Gender, 2000 to 2007



### 3.4 Injuries by Industry Sector

Table 10 - Time Loss Injuries by Major Industry Sectors and Selected Sub-Sectors, 2000 to 2007

| WCB Industry Sectors and Selected Sub-Sectors      | 2000   | 2001   | 2002   | 2003   | 2004   | 2005   | 2006   | 2007   |
|--|--------|--------|--------|--------|--------|--------|--------|--------|
| <b>Forestry</b>                                    | 20     | 29     | 26     | 29     | 25     | 19     | 15     | 27     |
| <b>Mining, Quarrying &amp; Oil Wells</b>           | 152    | 109    | 95     | 98     | 99     | 94     | 118    | 158    |
| • Mining   | 113    | 69     | 64     | 60     | 62     | 54     | 73     | 115    |
| <b>Manufacturing</b>                               | 7,640  | 6,355  | 5,565  | 5,231  | 4,604  | 4,526  | 4,497  | 4,239  |
| • Meat Processing                                  | 494    | 414    | 417    | 389    | 319    | 260    | 274    | 246    |
| • Metal Works                                      | 987    | 791    | 762    | 829    | 686    | 799    | 871    | 885    |
| • Vehicle Manufacturing                            | 1,119  | 914    | 501    | 425    | 286    | 273    | 236    | 240    |
| • Agricultural Implement Manufacturing             | 822    | 610    | 600    | 566    | 547    | 496    | 578    | 530    |
| • Wood Manufacturing                               | 1,316  | 1,109  | 986    | 880    | 764    | 717    | 645    | 567    |
| • Printing   | 239    | 204    | 245    | 205    | 198    | 195    | 177    | 149    |
| • Clothing Manufacturing                           | 214    | 172    | 167    | 155    | 130    | 77     | 68     | 59     |
| • Aircraft Manufacturing and Repair                | 225    | 224    | 182    | 124    | 116    | 104    | 123    | 141    |
| <b>Construction</b>                                | 1,645  | 1,384  | 1,416  | 1,510  | 1,561  | 1,770  | 1,892  | 2,035  |
| • Building Construction                            | 1,389  | 1,161  | 1,174  | 1,251  | 1,313  | 1,492  | 1,589  | 1,689  |
| • Heavy Construction                               | 256    | 223    | 242    | 259    | 248    | 278    | 303    | 346    |
| <b>Transportation, Communication &amp; Storage</b> | 1,349  | 1,208  | 1,156  | 1,213  | 1,297  | 1,275  | 1,317  | 1,495  |
| • Trucking   | 852    | 779    | 747    | 786    | 870    | 843    | 862    | 914    |
| <b>Trade</b>                                       | 2,622  | 2,593  | 2,418  | 2,479  | 2,552  | 2,574  | 2,683  | 2,643  |
| • Supermarket and Department Stores                | 1,262  | 1,354  | 1,265  | 1,303  | 1,322  | 1,413  | 1,433  | 1,377  |
| <b>Service</b>                                     | 3,389  | 3,470  | 3,460  | 3,516  | 3,647  | 3,588  | 3,692  | 3,814  |
| • Accommodation and Restaurants                    | 814    | 841    | 706    | 709    | 725    | 680    | 703    | 709    |
| • Health care                                      | 2,205  | 2,249  | 2,358  | 2,398  | 2,484  | 2,439  | 2,498  | 2,531  |
| <b>Public Administration</b>                       | 137    | 133    | 146    | 126    | 142    | 147    | 143    | 151    |
| <b>Voluntary</b>                                   | 925    | 875    | 814    | 823    | 911    | 855    | 959    | 833    |
| • Agriculture <sup>7</sup>                         | 88     | 114    | 109    | 120    | 141    | 113    | 112    | 114    |
| • Educational Institutions                         | 393    | 339    | 343    | 350    | 386    | 385    | 467    | 398    |
| <b>Self Insurers</b>                               | 1,761  | 1,641  | 1,479  | 1,674  | 1,796  | 1,849  | 1,826  | 1,870  |
| <b>Overall<sup>8</sup></b>                         | 19,640 | 17,797 | 16,575 | 16,699 | 16,634 | 16,697 | 17,142 | 17,265 |

Source: WCB Claim and Employer Databases

<sup>7</sup> Note: The WCB covers only a small proportion of the agriculture and education sectors so that most work-related injuries are not reported to the WCB.

<sup>8</sup> Totals may not add as a few injuries or illnesses do not have their sector coded.

**Table 11 – All Injuries by Major Industry Sectors and Selected Sub-Sectors, 2000 to 2007**

| <b>WCB Industry Sectors and Selected Sub-Sectors</b> | <b>2000</b>   | <b>2001</b>   | <b>2002</b>   | <b>2003</b>   | <b>2004</b>   | <b>2005</b>   | <b>2006</b>   | <b>2007</b>   |
|--|---------------|---------------|---------------|---------------|---------------|---------------|---------------|---------------|
| <b>Forestry</b>                                      | 42            | 64            | 74            | 49            | 44            | 49            | 35            | 41            |
| <b>Mining, Quarrying &amp; Oil Wells</b>             | 1,018         | 923           | 700           | 714           | 701           | 704           | 793           | 919           |
| • Mining   | 822           | 740           | 588           | 574           | 604           | 585           | 648           | 735           |
| <b>Manufacturing</b>                                 | <b>15,566</b> | <b>13,683</b> | <b>12,348</b> | <b>11,832</b> | <b>10,489</b> | <b>10,510</b> | <b>10,159</b> | <b>9,383</b>  |
| • Meat Processing                                    | 1,446         | 1,368         | 1,437         | 1,375         | 1,062         | 1,114         | 961           | 816           |
| • Metal Works  | 2,205         | 1,830         | 1,713         | 1,794         | 1,676         | 1,829         | 1,904         | 1,876         |
| • Vehicle Manufacturing                              | 1,816         | 1,484         | 934           | 812           | 557           | 553           | 501           | 535           |
| • Agricultural Implement Manufacturing               | 1,703         | 1,297         | 1,266         | 1,3290        | 1,350         | 1,256         | 1,257         | 1,188         |
| • Wood Manufacturing                                 | 2,609         | 2,509         | 2,296         | 2,035         | 1,756         | 1,743         | 1,674         | 1,436         |
| • Printing   | 466           | 377           | 433           | 442           | 383           | 361           | 335           | 295           |
| • Clothing Manufacturing                             | 339           | 294           | 274           | 244           | 192           | 155           | 128           | 100           |
| • Aircraft Manufacturing and Repair                  | 419           | 422           | 341           | 226           | 228           | 212           | 257           | 254           |
| <b>Construction</b>                                  | <b>3,306</b>  | <b>2,757</b>  | <b>2,736</b>  | <b>2,978</b>  | <b>3,045</b>  | <b>3,363</b>  | <b>3,688</b>  | <b>4,066</b>  |
| • Building Construction                              | 2,789         | 2,324         | 2,242         | 2,482         | 2,546         | 2,807         | 3,052         | 3,378         |
| • Heavy Construction                                 | 517           | 433           | 494           | 496           | 499           | 556           | 636           | 688           |
| <b>Transportation, Communication &amp; Storage</b>   | <b>2,355</b>  | <b>2,112</b>  | <b>1,942</b>  | <b>2,103</b>  | <b>2,170</b>  | <b>2,120</b>  | <b>2,178</b>  | <b>2,415</b>  |
| • Trucking   | 1,364         | 1,255         | 1,131         | 1,232         | 1,355         | 1,281         | 1,317         | 1,415         |
| <b>Trade</b>   | <b>5,278</b>  | <b>5,133</b>  | <b>4,890</b>  | <b>5,267</b>  | <b>5,234</b>  | <b>5,367</b>  | <b>5,613</b>  | <b>5,377</b>  |
| • Supermarket and Department Stores                  | 2,568         | 2,643         | 2,534         | 2,701         | 2,788         | 2,928         | 3,015         | 2,840         |
| <b>Service</b>                                       | <b>6,369</b>  | <b>6,415</b>  | <b>6,276</b>  | <b>6,552</b>  | <b>7,014</b>  | <b>6,881</b>  | <b>7,146</b>  | <b>7,095</b>  |
| • Accommodation and Restaurants                      | 1,968         | 1,863         | 1,632         | 1,606         | 1,645         | 1,580         | 1,639         | 1,528         |
| • Health care  | 3,795         | 3,922         | 4,014         | 4,244         | 4,575         | 4,463         | 4,616         | 4,528         |
| <b>Public Administration</b>                         | <b>318</b>    | <b>292</b>    | <b>310</b>    | <b>311</b>    | <b>295</b>    | <b>325</b>    | <b>348</b>    | <b>364</b>    |
| <b>Voluntary</b>                                     | <b>1,827</b>  | <b>1,682</b>  | <b>1,692</b>  | <b>1,758</b>  | <b>1,849</b>  | <b>1,799</b>  | <b>2,005</b>  | <b>1,772</b>  |
| • Agriculture <sup>9</sup>                           | 174           | 206           | 207           | 238           | 271           | 213           | 234           | 211           |
| • Educational Institutions                           | 751           | 649           | 708           | 723           | 741           | 764           | 851           | 860           |
| <b>Self Insurers</b>                                 | <b>3,890</b>  | <b>3,731</b>  | <b>3,422</b>  | <b>3,656</b>  | <b>3,828</b>  | <b>3,869</b>  | <b>3,785</b>  | <b>3,820</b>  |
| <b>Overall<sup>10</sup></b>                          | <b>39,969</b> | <b>36,792</b> | <b>34,390</b> | <b>35,220</b> | <b>34,669</b> | <b>34,987</b> | <b>35,750</b> | <b>35,252</b> |

Source: WCB Claim and Employer Databases

<sup>9</sup> Note: The WCB covers only a small proportion of the agriculture and education sectors so that most work-related injuries are not reported to the WCB.

<sup>10</sup> Totals may not add as a few injuries or illnesses do not have their sector coded.

Figure 20 – Proportions of Injuries and FTE Workers by Major Industry Sectors, 2007

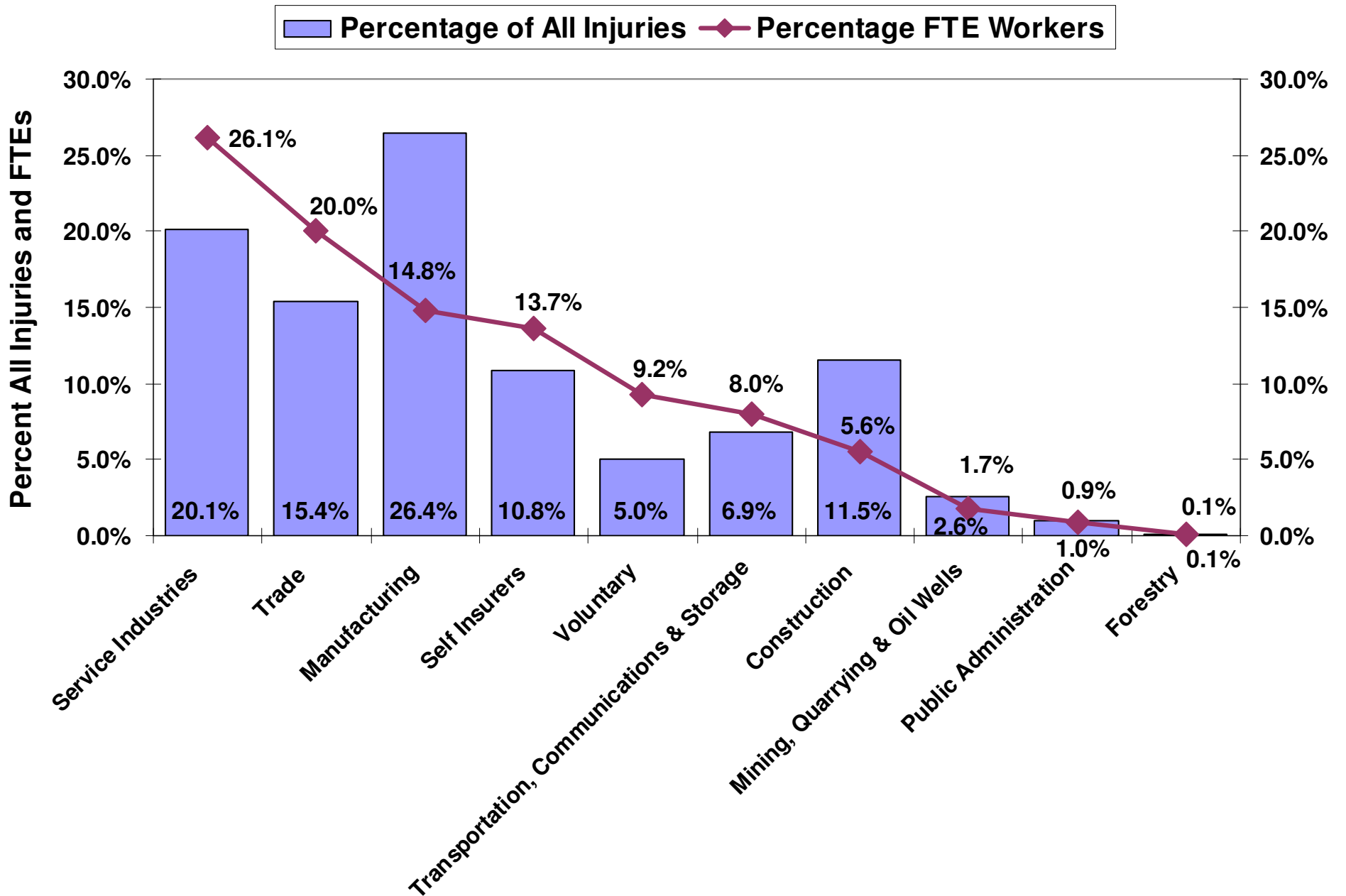


Figure 21 - Time Loss Injury Trends in Major Occupational Groupings, 2000 to 2007

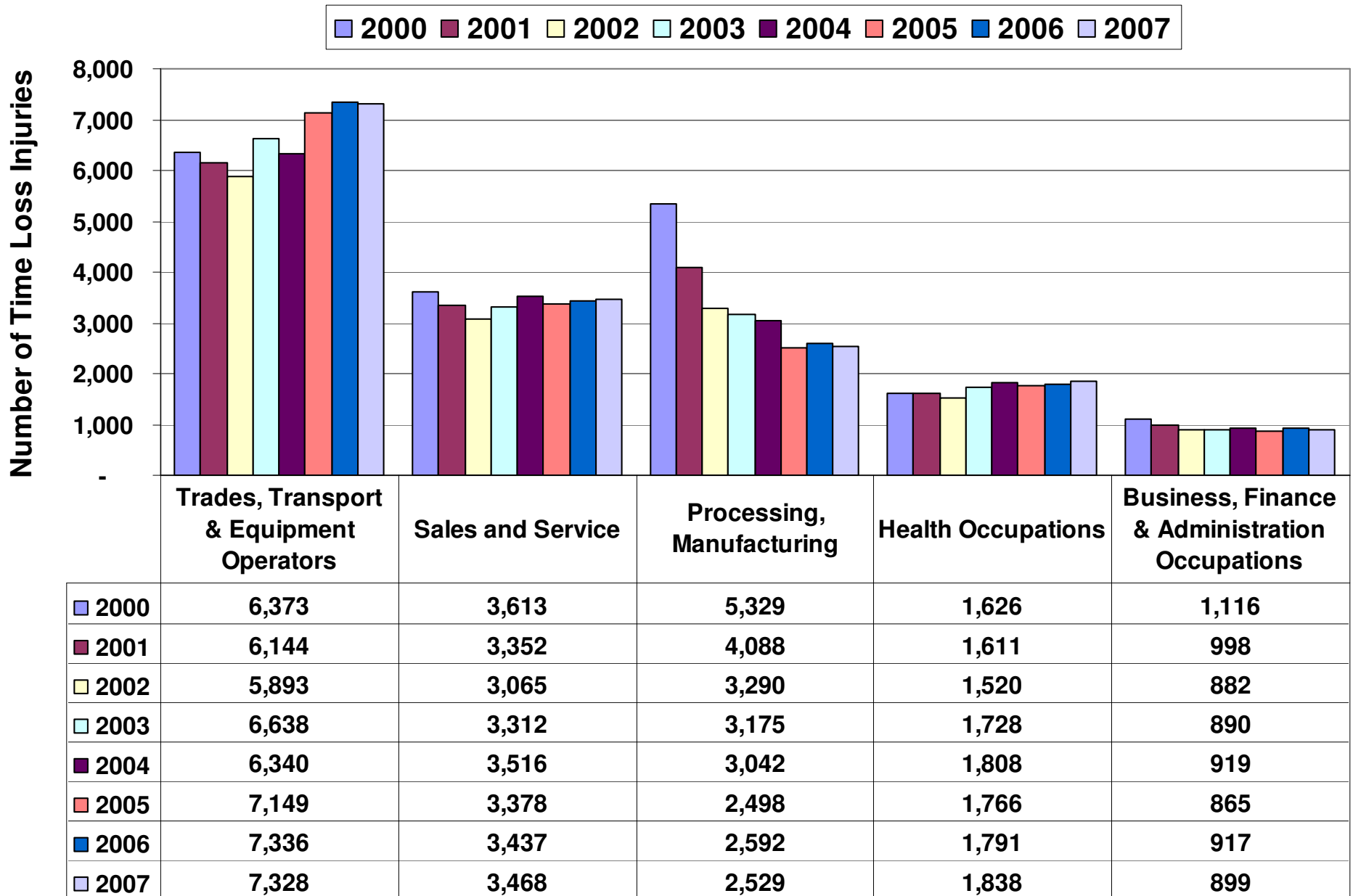
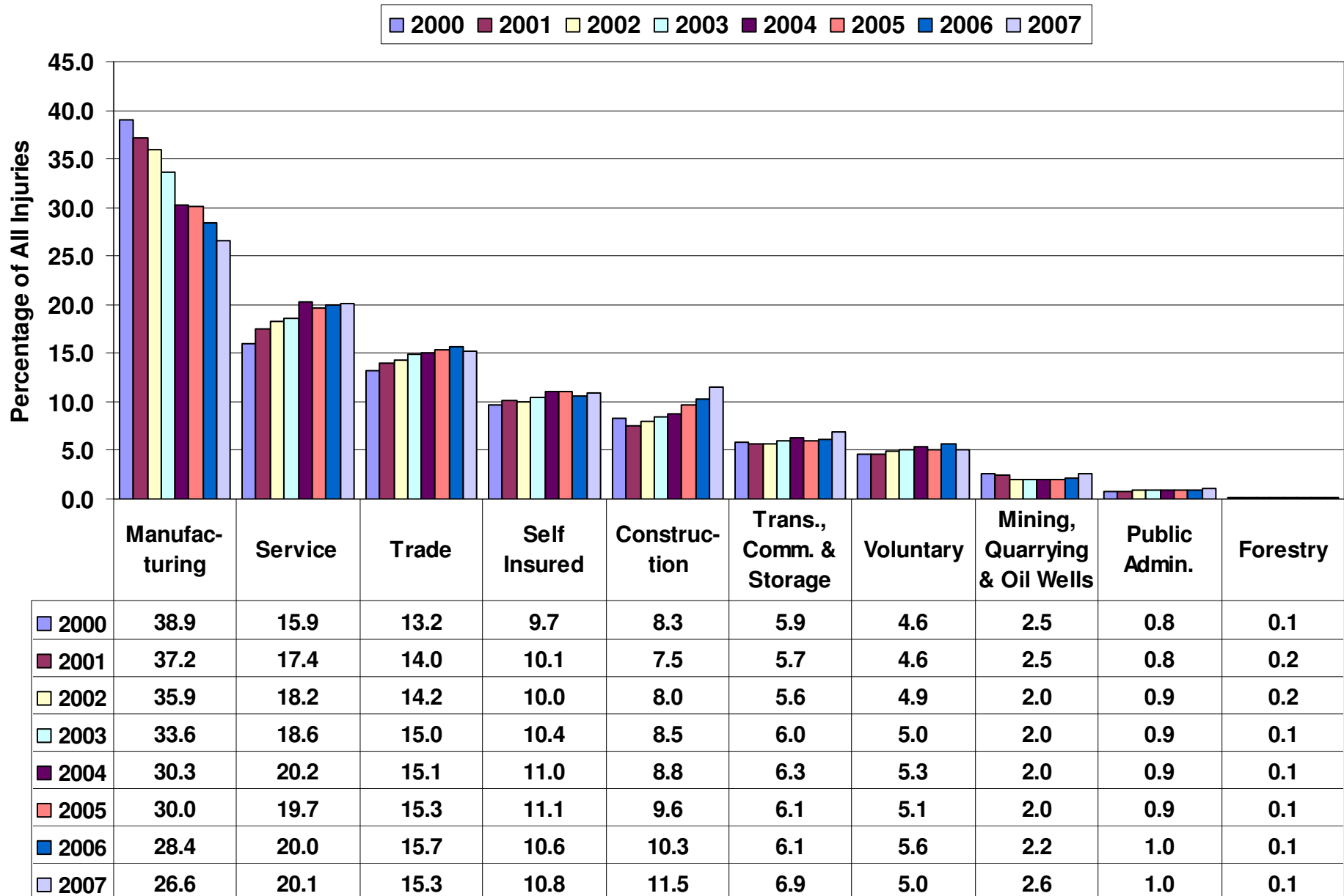
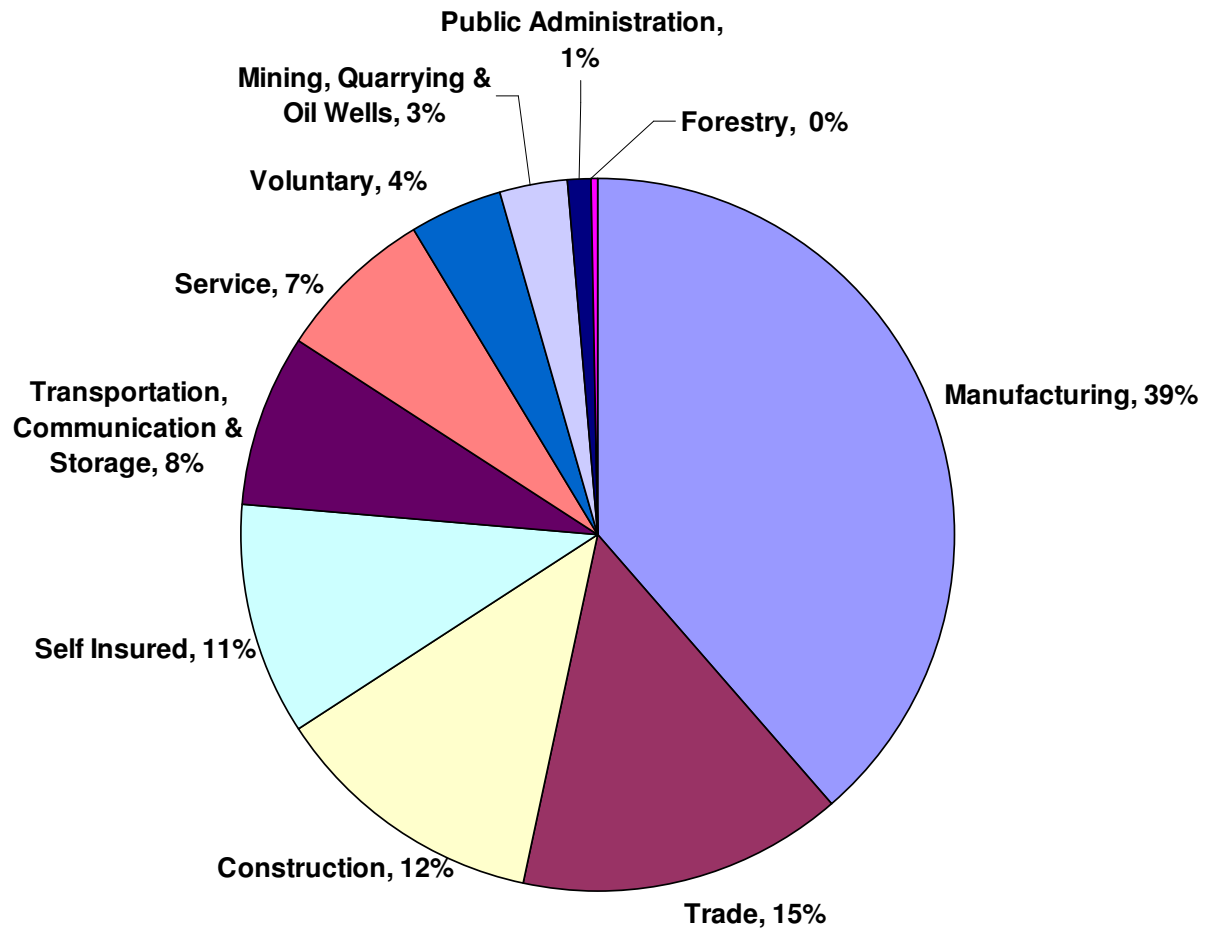


Figure 22 - Percent Distribution of All Injuries by Major Industry Sectors, 2000 to 2007

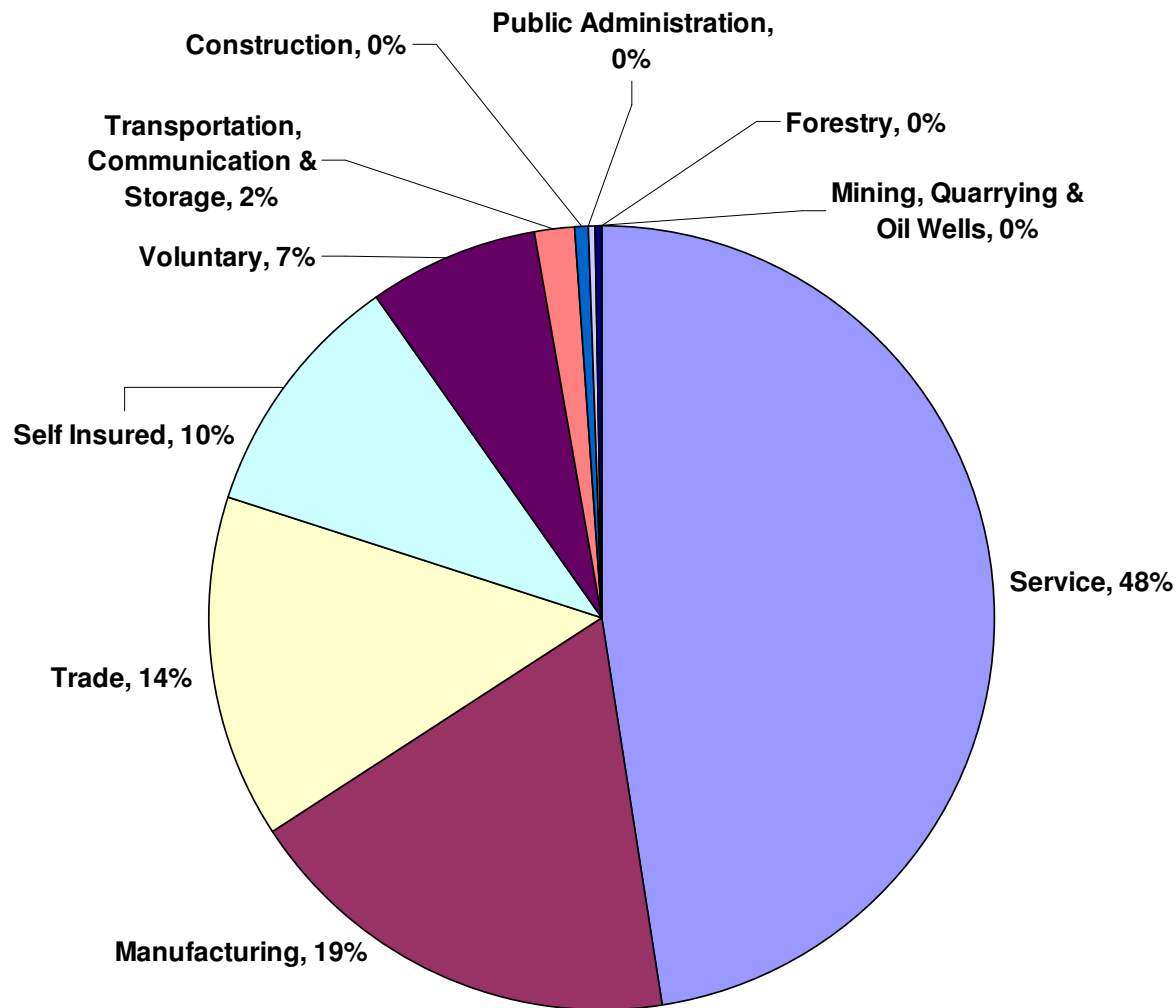


**Figure 23 - Male Injuries by Major Industry Sectors, 2000 to 2007**



|  |                |
|--|----------------|
| <b>Manufacturing</b>                               | <b>78,599</b>  |
| <b>Trade</b>                                       | <b>30,333</b>  |
| <b>Construction</b>                                | <b>25,456</b>  |
| <b>Self Insured</b>                                | <b>21,422</b>  |
| <b>Transportation, Communication &amp; Storage</b> | <b>16,080</b>  |
| <b>Service</b>                                     | <b>14,698</b>  |
| <b>Voluntary</b>                                   | <b>8,582</b>   |
| <b>Mining, Quarrying &amp; Oil Wells</b>           | <b>6,209</b>   |
| <b>Public Administration</b>                       | <b>2,239</b>   |
| <b>Forestry</b>                                    | <b>386</b>     |
| <b>Total</b>                                       | <b>204,004</b> |

Figure 24 - Female Injuries by Major Industry Sectors, 2000 to 2007



|   |        |
|---|--------|
| Service                                 | 38,824 |
| Manufacturing                           | 15,096 |
| Trade                                   | 11,651 |
| Self Insured                            | 8,370  |
| Voluntary                               | 5,736  |
| Transportation, Communication & Storage | 1,266  |
| Construction                            | 370    |
| Public Administration                   | 311    |
| Mining, Quarrying & Oil Wells           | 203    |
| Forestry                                | 10     |
| Total                                   | 81,837 |

### 3.5 Occupations of Injured and Ill Workers (Time Loss Injuries Only)

Table 12- Time Loss Injuries by Occupational Groups, 2000 to 2007

| Occupational Groups                            | Year of Injury or Illness |               |               |               |               |               |               |               |
|--|---------------------------|---------------|---------------|---------------|---------------|---------------|---------------|---------------|
|  | 2000                      | 2001          | 2002          | 2003          | 2004          | 2005          | 2006          | 2007          |
| Trades, Transport & Equipment Operators        | 6,373                     | 6,144         | 5,893         | 6,638         | 6,340         | 7,149         | 7,336         | 7,328         |
| Processing, Manufacturing                      | 5,329                     | 4,088         | 3,290         | 3,175         | 3,042         | 2,498         | 2,592         | 2,529         |
| Sales and Service                              | 3,613                     | 3,352         | 3,065         | 3,312         | 3,516         | 3,378         | 3,437         | 3,468         |
| Health Occupations                             | 1,626                     | 1,611         | 1,520         | 1,728         | 1,808         | 1,766         | 1,791         | 1,838         |
| Business, Finance & Administration Occupations | 1,116                     | 998           | 882           | 890           | 919           | 865           | 917           | 899           |
| Primary Industry                               | 270                       | 204           | 191           | 182           | 205           | 173           | 219           | 267           |
| Social Science, Education, Government          | 166                       | 157           | 206           | 257           | 291           | 364           | 402           | 426           |
| Management Occupations                         | 151                       | 140           | 177           | 181           | 203           | 210           | 173           | 212           |
| Natural & Applied Sciences & Related           | 149                       | 126           | 115           | 171           | 150           | 190           | 174           | 209           |
| Art, Culture, Recreation                       | 48                        | 46            | 55            | 64            | 72            | 67            | 80            | 78            |
| Not Coded                                      | 799                       | 931           | 1,181         | 101           | 88            | 37            | 21            | 11            |
| <b>Total</b>                                   | <b>19,640</b>             | <b>17,797</b> | <b>16,575</b> | <b>16,699</b> | <b>16,634</b> | <b>16,697</b> | <b>17,142</b> | <b>17,265</b> |

### 3.6 Part of Body Injured

Table 13 - Injuries by Part of Body Injured (“Stickman<sup>11</sup> Codes”), 2000 to 2007

| Stickman Code Description           | Year of Injury or Illness |               |               |               |               |               |               |               |
|-------------------------------------|---------------------------|---------------|---------------|---------------|---------------|---------------|---------------|---------------|
|                                     | 2000                      | 2001          | 2002          | 2003          | 2004          | 2005          | 2006          | 2007          |
| Hand/fingers                        | 9,276                     | 8,614         | 7,966         | 7,838         | 7,575         | 7,519         | 7,510         | 7,159         |
| Multiple                            | 5,929                     | 5,535         | 5,415         | 5,277         | 5,612         | 5,653         | 6,037         | 6,277         |
| Lower Back                          | 6,024                     | 5,481         | 5,065         | 5,352         | 5,084         | 5,062         | 5,207         | 5,045         |
| Lower Leg                           | 3,397                     | 3,199         | 3,092         | 3,244         | 3,160         | 3,385         | 3,405         | 3,395         |
| Lower Arm                           | 3,506                     | 3,176         | 2,957         | 3,181         | 3,148         | 2,913         | 2,972         | 2,774         |
| Eyes                                | 3,600                     | 2,905         | 2,770         | 2,829         | 2,697         | 2,679         | 2,710         | 2,568         |
| Shoulder                            | 1,536                     | 1,500         | 1,367         | 1,467         | 1,527         | 1,614         | 1533          | 1,573         |
| Foot/toes                           | 1,352                     | 1,220         | 1,103         | 1,141         | 1,027         | 1,019         | 1117          | 1,153         |
| Miscellaneous                       | 1,167                     | 1,188         | 943           | 979           | 1,013         | 1,077         | 1,051         | 1,098         |
| Ribs/Chest                          | 919                       | 865           | 796           | 877           | 862           | 866           | 943           | 929           |
| Head                                | 861                       | 751           | 760           | 759           | 730           | 711           | 781           | 746           |
| Abdomen                             | 482                       | 508           | 442           | 466           | 420           | 465           | 473           | 469           |
| Hearing                             | 309                       | 322           | 374           | 409           | 496           | 618           | 600           | 742           |
| Neck                                | 395                       | 346           | 327           | 289           | 295           | 304           | 316           | 302           |
| Upper Back                          | 253                       | 240           | 249           | 281           | 254           | 284           | 263           | 250           |
| Upper Leg                           | 245                       | 236           | 170           | 213           | 223           | 213           | 245           | 231           |
| Cardio Vascular/ Respiratory System | 290                       | 273           | 193           | 193           | 159           | 203           | 202           | 178           |
| Pelvis                              | 184                       | 188           | 179           | 167           | 168           | 160           | 149           | 157           |
| Upper arm                           | 142                       | 155           | 156           | 147           | 135           | 167           | 169           | 144           |
| Industrial Disease                  | 76                        | 64            | 41            | 76            | 48            | 33            | 51            | 37            |
| Not Coded                           | 26                        | 26            | 25            | 35            | 36            | 42            | 16            | 25            |
| <b>Total</b>                        | <b>39,969</b>             | <b>36,792</b> | <b>34,390</b> | <b>35,220</b> | <b>34,669</b> | <b>34,987</b> | <b>35,750</b> | <b>35,252</b> |

<sup>11</sup> WCB Coding system for all injuries where body part injured is related to a stick figure: A=head, B=Eyes, C=neck, D=shoulder etc.

**Table 14 - Time Loss Injuries by Part of Body Affected, 2000 to 2007**

| Part of Body <sup>12</sup>                           | Year of Notification of Injury or Illness |               |               |               |               |               |               |               |
|--|---|---------------|---------------|---------------|---------------|---------------|---------------|---------------|
|  | 2000                                      | 2001          | 2002          | 2003          | 2004          | 2005          | 2006          | 2007          |
| Back including spine & spinal cord                   | 5,029                                     | 4,610         | 4,487         | 4,656         | 4,760         | 4,766         | 4,872         | 4,905         |
| Other trunk  | 2,086                                     | 1,780         | 1,597         | 1,714         | 1,902         | 2,142         | 1,920         | 2,151         |
| <b>Trunk</b>   | <b>7,115</b>                              | <b>6,390</b>  | <b>6,084</b>  | <b>6,370</b>  | <b>6,662</b>  | <b>6,908</b>  | <b>6,792</b>  | <b>7,056</b>  |
| Fingers  | 2,212                                     | 2,102         | 1,952         | 1,743         | 1,750         | 1,763         | 1,732         | 1,668         |
| Hands/wrists except fingers                          | 1,775                                     | 1,468         | 1,263         | 1,358         | 1,411         | 1,316         | 1,386         | 1,346         |
| Other upper extremities                              | 1,225                                     | 1,034         | 1,124         | 1,065         | 1,067         | 1,016         | 1,060         | 1,078         |
| <b>Upper Extremities</b>                             | <b>5,212</b>                              | <b>4,604</b>  | <b>4,339</b>  | <b>4,166</b>  | <b>4,228</b>  | <b>4,095</b>  | <b>4,178</b>  | <b>4,092</b>  |
| Legs   | 1,286                                     | 1,243         | 1,169         | 1,202         | 1,237         | 1,315         | 1,342         | 1,367         |
| Ankles/feet (not toes)                               | 1,274                                     | 1,232         | 1,151         | 1,181         | 1,116         | 1,141         | 1,210         | 1,174         |
| Other lower extremities                              | 312                                       | 212           | 268           | 267           | 272           | 255           | 271           | 523           |
| <b>Lower Extremities</b>                             | <b>2,872</b>                              | <b>2,687</b>  | <b>2,588</b>  | <b>2,650</b>  | <b>2,625</b>  | <b>2,711</b>  | <b>2,823</b>  | <b>3,064</b>  |
| Eyes   | 915                                       | 746           | 655           | 659           | 632           | 636           | 646           | 647           |
| Other head   | 420                                       | 362           | 323           | 360           | 380           | 449           | 376           | 427           |
| Neck   | 252                                       | 211           | 207           | 184           | 229           | 250           | 245           | 279           |
| <b>Head and Neck</b>                                 | <b>1,587</b>                              | <b>1,319</b>  | <b>1,185</b>  | <b>1,203</b>  | <b>1,241</b>  | <b>1,335</b>  | <b>1,267</b>  | <b>1,353</b>  |
| <b>Multiple body parts</b>                           | <b>2,322</b>                              | <b>2,391</b>  | <b>2,211</b>  | <b>2,062</b>  | <b>1,645</b>  | <b>1,580</b>  | <b>1,865</b>  | <b>1,679</b>  |
| <b>Body Systems</b>                                  | <b>241</b>                                | <b>192</b>    | <b>131</b>    | <b>150</b>    | <b>147</b>    | <b>155</b>    | <b>211</b>    | <b>200</b>    |
| <b>Missing/Not Coded/Part of body- unknown/other</b> | <b>291</b>                                | <b>214</b>    | <b>37</b>     | <b>98</b>     | <b>86</b>     | <b>13</b>     | <b>7</b>      | <b>19</b>     |
| <b>Total</b>   | <b>19,640</b>                             | <b>17,797</b> | <b>16,575</b> | <b>16,699</b> | <b>16,634</b> | <b>16,697</b> | <b>17,142</b> | <b>17,265</b> |

<sup>12</sup> Note: This table is based on the CSA Z795 coding standard.

### 3.7 Time Loss Injuries by Nature of Injury or Illness

Table 15 - Time Loss Injuries by Nature of Injury or Illness, 2000 to 2007

| Nature of Injury or Illness <sup>13</sup> | Year of Injury or Illness |               |               |               |               |               |               |               |
|---|---------------------------|---------------|---------------|---------------|---------------|---------------|---------------|---------------|
|   | 2000                      | 2001          | 2002          | 2003          | 2004          | 2005          | 2006          | 2007          |
| Sprains, strains and tears                | 8,582                     | 8,591         | 8,600         | 8,846         | 9,133         | 9,438         | 9,747         | 9,747         |
| Surface wounds, bruises                   | 2,623                     | 2,212         | 1,986         | 2,029         | 1,998         | 2,046         | 1,897         | 1,866         |
| Open wounds                               | 2,211                     | 2,085         | 1,894         | 1,716         | 1,675         | 1,637         | 1,584         | 1,609         |
| Other traumatic injuries & disorders      | 2,593                     | 2,292         | 1,683         | 1,249         | 991           | 966           | 983           | 1,156         |
| Fractures, dislocations                   | 941                       | 753           | 799           | 882           | 1,064         | 990           | 1,018         | 983           |
| Burns                                     | 441                       | 403           | 342           | 301           | 332           | 309           | 309           | 340           |
| <b>Traumatic Injuries and Disorders</b>   | <b>17,391</b>             | <b>16,336</b> | <b>15,304</b> | <b>15,023</b> | <b>15,193</b> | <b>15,386</b> | <b>15,538</b> | <b>15,701</b> |
| Systemic diseases & disorders             | 1,634                     | 1,030         | 972           | 1,191         | 1,123         | 1,127         | 1,181         | 1,181         |
| Other diseases, conditions & disorders    | 74                        | 55            | 40            | 53            | 45            | 41            | 55            | 70            |
| Symptoms, signs, ill defined conditions   | 164                       | 74            | 46            | 97            | 42            | 52            | 56            | 52            |
| Infectious, parasitic diseases            | 33                        | 28            | 20            | 25            | 17            | 17            | 41            | 19            |
| Multiple diseases, conditions & disorders | 14                        | 5             | 29            | 158           | 71            | 43            | 1             | -             |
| Neoplasms, tumors & cancer                | 8                         | 10            | 10            | 17            | 8             | 10            | 11            | 7             |
| <b>Occupational Illnesses</b>             | <b>1,927</b>              | <b>1,202</b>  | <b>1,117</b>  | <b>1,541</b>  | <b>1,306</b>  | <b>1,290</b>  | <b>1,345</b>  | <b>1,329</b>  |
| Nature of Disease Unknown or Not Coded    | 322                       | 259           | 154           | 135           | 135           | 21            | 259           | 235           |
| <b>Total</b>                              | <b>19,640</b>             | <b>17,797</b> | <b>16,575</b> | <b>16,699</b> | <b>16,634</b> | <b>16,697</b> | <b>17,142</b> | <b>17,265</b> |

<sup>13</sup> Note: This table is based on the CSA Z795 coding standard.

### 3.8 Time Loss Injuries by Source of Injury or Illness

Table 16 - Time Loss Injuries by Source of Injury or Illness, 2000 to 2007

| Primary Source of Injury or Illness <sup>14</sup>                     | Year of Injury or Illness |              |              |              |              |              |              |              |
|---|---------------------------|--------------|--------------|--------------|--------------|--------------|--------------|--------------|
|   | 2000                      | 2001         | 2002         | 2003         | 2004         | 2005         | 2006         | 2007         |
| Persons-bodily position or repetitive motion of injured or ill worker | 4,794                     | 5,576        | 5,577        | 5,143        | 3,878        | 3,819        | 4,329        | 4,230        |
| Persons- other than injured worker (e.g. patients or co-workers)      | 1,196                     | 1,125        | 879          | 1,023        | 1,168        | 1,050        | 1,052        | 1,073        |
| Other persons, plants, animals, minerals                              | 345                       | 285          | 262          | 280          | 309          | 250          | 284          | 261          |
| <b>Persons, Plants, Animals and Minerals<sup>15</sup></b>             | <b>6,335</b>              | <b>6,986</b> | <b>6,718</b> | <b>6,446</b> | <b>5,355</b> | <b>5,119</b> | <b>5,665</b> | <b>5,564</b> |
| <b>Structures and Surfaces</b>  | 2,516                     | 2,405        | 2,356        | 2,451        | 2,677        | 3,078        | 3,016        | 3,026        |
| <b>Parts and Materials</b>  | 2,713                     | 2,013        | 1,735        | 1,774        | 2,061        | 2,329        | 2,359        | 2,399        |
| <b>Containers</b>   | 2,258                     | 1,562        | 1,510        | 1,563        | 1,759        | 1,763        | 1,660        | 1,763        |
| <b>Vehicles</b>   | 846                       | 715          | 659          | 686          | 813          | 827          | 873          | 854          |
| Hand tools- non-powered   | 770                       | 717          | 605          | 612          | 616          | 657          | 631          | 641          |
| Hand tools-powered  | 379                       | 288          | 266          | 251          | 248          | 253          | 223          | 199          |
| Other-tools and equipment   | 177                       | 115          | 167          | 213          | 276          | 268          | 312          | 373          |
| <b>Tools, Instruments and Equipment</b>                               | <b>1,326</b>              | <b>1,120</b> | <b>1,038</b> | <b>1,076</b> | <b>1,140</b> | <b>1,178</b> | <b>1,166</b> | <b>1,213</b> |
| <b>Machinery</b>  | 1,244                     | 901          | 880          | 1,019        | 1,090        | 839          | 789          | 843          |
| <b>Other Sources</b>  | 894                       | 849          | 759          | 774          | 894          | 750          | 754          | 763          |

<sup>14</sup>This table is based on the CSA Z795 coding standard.

<sup>15</sup> This category includes injuries sustained due to the bodily motion of the injured worker, repetitive motions and injuries caused by co-workers, customers or others such as health care patients

|  |               |               |               |               |               |               |               |               |
|--|---------------|---------------|---------------|---------------|---------------|---------------|---------------|---------------|
| <b>Furniture and Fixtures</b>          | 652           | 535           | 484           | 542           | 538           | 544           | 517           | 516           |
| <b>Chemicals and Chemical Products</b> | 312           | 228           | 166           | 207           | 182           | 170           | 179           | 206           |
| <b>Source Unknown or Not Coded</b>     | <b>544</b>    | <b>483</b>    | <b>270</b>    | <b>161</b>    | <b>125</b>    | <b>100</b>    | <b>164</b>    | <b>118</b>    |
| <b>Total</b>                           | <b>19,640</b> | <b>17,797</b> | <b>16,575</b> | <b>16,699</b> | <b>16,634</b> | <b>16,697</b> | <b>17,142</b> | <b>17,265</b> |

### 3.9 Time Loss Injuries by Event or Exposure of Injury or Illness

Table 17 - Time Loss Injuries by Type of Event or Exposure of Injury or Illness, 2000 to 2007

| Type of Event or Exposure <sup>16</sup> | Year of Injury or Illness |               |               |               |               |               |               |               |
|---|---------------------------|---------------|---------------|---------------|---------------|---------------|---------------|---------------|
|   | 2000                      | 2001          | 2002          | 2003          | 2004          | 2005          | 2006          | 2007          |
| Overexertion                            | 4,955                     | 3,325         | 2,883         | 3,403         | 3,860         | 3,813         | 3,722         | 3,803         |
| Bodily reaction                         | 3,863                     | 4,867         | 4,858         | 4,157         | 3,369         | 3,120         | 3,024         | 3,088         |
| Repetitive motions                      | 875                       | 651           | 693           | 952           | 814           | 1,114         | 1,513         | 1,449         |
| <b>Bodily Reaction and Exertion</b>     | <b>9,693</b>              | <b>8,843</b>  | <b>8,434</b>  | <b>8,512</b>  | <b>8,043</b>  | <b>8,047</b>  | <b>8,259</b>  | <b>8,340</b>  |
| Struck by objects                       | 2,824                     | 2,523         | 2,385         | 2,242         | 2,135         | 2,152         | 2,323         | 2,371         |
| Struck against objects                  | 1,576                     | 1,319         | 1,130         | 1,186         | 1,349         | 1,104         | 984           | 1,064         |
| Caught in objects                       | 897                       | 881           | 823           | 818           | 851           | 880           | 954           | 849           |
| Rubbed or abraded                       | 659                       | 539           | 408           | 491           | 352           | 503           | 469           | 460           |
| <b>Contact with Objects, Equipment</b>  | <b>5,956</b>              | <b>5,262</b>  | <b>4,746</b>  | <b>4,737</b>  | <b>4,687</b>  | <b>4,639</b>  | <b>4,730</b>  | <b>4,744</b>  |
| Fall on same level                      | 1,346                     | 1,413         | 1,458         | 1,531         | 1,871         | 1,906         | 1,908         | 1,929         |
| Fall from height                        | 853                       | 794           | 756           | 706           | 770           | 897           | 876           | 865           |
| <b>Falls</b>                            | <b>2,199</b>              | <b>2,207</b>  | <b>2,214</b>  | <b>2,237</b>  | <b>2,641</b>  | <b>2,803</b>  | <b>2,784</b>  | <b>2,794</b>  |
| <b>Exposure to Harmful Substances</b>   | 914                       | 778           | 624           | 646           | 596           | 599           | 703           | 694           |
| <b>Transportation Incidents</b>         | 285                       | 234           | 247           | 223           | 311           | 379           | 397           | 403           |
| <b>Assaults and Violent Acts</b>        | 249                       | 211           | 190           | 224           | 243           | 199           | 214           | 238           |
| <b>Fires and Explosions</b>             | 19                        | 10            | 18            | 8             | 15            | 7             | 21            | 25            |
| <b>Event Unknown/Missing/ Not Coded</b> | <b>325</b>                | <b>252</b>    | <b>102</b>    | <b>112</b>    | <b>98</b>     | <b>24</b>     | <b>34</b>     | <b>27</b>     |
| <b>Total</b>                            | <b>19,640</b>             | <b>17,797</b> | <b>16,575</b> | <b>16,699</b> | <b>16,634</b> | <b>16,697</b> | <b>17,142</b> | <b>17,265</b> |

<sup>16</sup> Note: This table is based on the CSA Z795 coding standard.

### 3.10 Musculoskeletal Injuries

**Table 18 - Musculoskeletal Time Loss Injuries (MSI), 2000 to 2007**

| Type of Injury                    | Year of Injury |               |               |               |               |               |               |               |
|-----------------------------------|----------------|---------------|---------------|---------------|---------------|---------------|---------------|---------------|
|                                   | 2000           | 2001          | 2002          | 2003          | 2004          | 2005          | 2006          | 2007          |
| Musculoskeletal Injuries          | 10,459         | 9,458         | 9,513         | 9,872         | 10,115        | 10,353        | 10,667        | 10,739        |
| Non-Musculoskeletal <sup>17</sup> | 9,181          | 8,339         | 7,062         | 6,827         | 6,519         | 6,344         | 6,475         | 6,526         |
| <b>Total</b>                      | <b>19,640</b>  | <b>17,797</b> | <b>16,575</b> | <b>16,699</b> | <b>16,634</b> | <b>16,697</b> | <b>17,142</b> | <b>17,265</b> |
| Musculoskeletal<br>(% of Total)   | 53.3%          | 53.1%         | 57.4%         | 59.1%         | 60.8%         | 62.0%         | 62.2%         | 62.2%         |

<sup>17</sup> Examples include fractures, open wounds, burns, occupational diseases, hearing loss

Figure 25 – The Number and Proportion of Musculoskeletal Injuries to Time Loss Injuries, 2000 to 2007

